

Old Lyme events

VOLUME 10 • QUARTER 2 • 2016



DELIVERING TOWN NEWS



TO EVERYONE IN TOWN

NOT FEELING LIKE YOURSELF?

QUICK, CONVENIENT, FRIENDLY, EXPERT CARE



We're here for you
when you need help with:

- Sore throat/cold/cough
- Pink eye
- Earache
- Sinus pain
- Flu-like symptoms
- Sprains and strains
- Minor burns/cuts/bruises
(and suture removal)
- Rashes
- Minor sports injuries
- Broken bones
- And more

NO APPOINTMENT NEEDED!



MADISON

146 Samson Rock Drive, Madison, CT
203-779-5207



OLD SAYBROOK

1687 Boston Post Road, Old Saybrook, CT
860-661-5976



MIDDLETOWN

896 Washington Street, Middletown, CT
860-788-3632

Learn more at: mhurgentcare.com

HOURS AT ALL THREE LOCATIONS

Mon. – Fri. 8:00 a.m. – 8:00 p.m.

Sat. – Sun. 8:00 a.m. – 4:30 p.m.



MIDDLESEX HOSPITAL
URGENT CARE

WALK-IN MEDICAL CENTER

First Selectwoman's Corner

It is refreshing to see the leaves begin to poke their heads out, with the promise of sunshine and warmth to come. Of course it won't be long before we are complaining about the heat, so enjoying the spring weather is so important now. As usual, there's a lot going on in the Town of Old Lyme.

Many residents have inquired about the proposed alternatives for the **NEC Futures Plan**, particularly with Alternative 1, which originally proposed an aerial structure slicing through the heart of our historic, commercial and arts district. After the end of the comment period, which was in February, members of the NEC Futures team contacted the Town of Old Lyme and requested a meeting to review the comments from Old Lyme. In total, there were 3000 comments about all the draft plans (3 Alternatives), and 1200 of those comments were from Old Lyme! *Kudos to our community for succeeding in getting the attention of the FRA planning team.* On March 11, 2016, five members of their planning team met with me and three other community members, as well as a representative from Congressman Courtney's office. The outcome of that meeting is that the team agreed that an aerial structure going through Old Lyme was not a reasonable plan, and they committed to us that IF Alternative 1 is the preferred alternative, it would not include an aerial structure through Old Lyme. This obviously means that a tunnel under the CT River would be built. Of course, this also

comes with many concerns regarding the protection of the CT River and its estuaries, so there was further discussion about those concerns. Our group was very appreciative that the Federal Railroad Administration took our concerns so seriously, and I followed up with a letter to the FRA summarizing the meeting. That letter, along with the response from the FRA, is now posted on the town website, www.oldlyme-ct.gov under Current Projects. The FRA will announce their preferred Alternative sometime this summer, and publish the Final Tier 1 EIS in the Fall of 2016. At that time, we will know if the Saybrook to Kenyon, RI bypass is still part of the plan. The Town of Old Lyme, with the help of the RiverCOG, continues to monitor this issue.

The Town of Old Lyme continues to await final approval for our **application for a permit for herbicide treatment of invasive weeds in Rogers Lake**. If the permit is approved, the Towns hope to treat 39 targeted acres of the lake in June, which would include the boat launch area, shallow areas around the center island that are highly traveled by boat traffic, and other high use areas. The

Continued on page 3



First Selectwoman
Bonnie Reemsnyder

STRESSLESS NIGHTS

Let us show you what a **Quality Mattress** feels like



Our Stressless Night Mattress Collection is designed and handmade exclusively for Saybrook Country Barn



Main St., Old Saybrook 860.388.0891 saybrookcountrybarn.com

events

TM Ventures, LLC dba Essex Printing & Events Magazines

18 Industrial Park Road, P.O.Box 205
Centerbrook, CT 06409

860-767-9087 Fax 860-767-0259
email: print@essexprinting.com
www.essexprinting.com

PUBLISHER

William E. McMinn

DIRECTOR OF ADVERTISING/OPERATIONS

Suzanne Spires 860-391-5534
suzanne@essexprinting.com

ART DIRECTOR / ARTICLE COORDINATOR

Kathy Alsop 860-391-4372
kathy@eventsmagazines.com

COVER EDITOR

AC Proctor 860-767-9087

SALES REPRESENTATIVES

VERNON • TOLLAND • ELLINGTON • WILLINGTON

Tom Fortin 860-299-4568
tom@eventsmagazines.com

ESSEX • WESTBROOK • CLINTON • MADISON

Ward Feirer 914-806-5500
wfeirer@gmail.com

OLD SAYBROOK • OLD LYME • EAST LYME

Betty Martelle 860-333-7117
betty@eventsmagazines.com

MONTVILLE • NEW LONDON • STONINGTON

Chris Angeli 860-391-5725
cangeli@eventsmagazines.com

BRANFORD • GUILFORD • WOODBRIDGE

Nancy Lee Salk 203-219-3282
nancy@eventsmagazines.com

EAST HADDAM • HADDAM • CHESTER

Sue Smith 860-885-9670
sue@eventsmagazines.com

MAGAZINE LAYOUT

Amy Bransfield

Cover Photo: AC Proctor

www.eventsmagazines.com

**1.2 MILLION READERS
20 TOWNS EVERY QUARTER**

Copyright © 2013 Events Magazines. All rights reserved. No part of this publication may be reproduced or transmitted in any form or by any means, electronic or mechanical, including photocopy, recording, or any information storage and retrieval system without written permission. Not responsible for omissions or typographical errors. All advertising material created by Essex Printing and Events Magazines is to be considered proprietary. Essex Printing and Events Magazines reserves the rights and license to all ad designs and photographic images produced by Essex Printing and Events Magazines. Reproduction rights for individual use in other publications is offered and available by purchase directly through Essex Printing and Events Magazines. Editorial appearing in this magazine is submitted by municipal agencies and other approved sources.

Contents

First Selectwoman's Corner	1	Renters Rebate Program for Seniors and Totally Disabled Renters in Old Lyme	33
The Lyme Tree, A Woman's Exchange Of Old Lyme	2	Lymes' Youth Service Bureau	34
Midsummer, Summer 2016	6	Trash and Recycling	36
Old Lyme Country Club Celebrates Its 100 Year Anniversary	7	Dog Licenses	36
Duck River Garden Club	8	Recycling in Old Lyme	37
Guests Enjoy a Great "Night in Havana" at Old Lyme's Bookworm Ball	10	Old Lyme Conservation Commission	38
Old Lyme Animal Shelter	11	Lyme Art Association	38
Lyme Academy College of Fine Arts	12	Old Lyme Fire Department Auxiliary	38
Lyme-Old Lyme Chamber of Commerce Hosts Summer Events, Meetings, New Initiatives and More	14	Rogers Lake Authority News	39
"Hawaii Five.0" 5k Road Race Will Help Send Our Student Musicians To Pearl Harbor Commemoration	16	Senior Center Summer Concert Series	39
The Old Lyme Town Band Summer Concert Series	17	Beach Sticker Information	39
The 80th Annual White Elephant Sale Opens Friday, July 8th	18	Old Lyme Phoebe Griffin Noyes Library	40
Transfer Station/Landfill Hours	20	Lyme-Old Lyme High School Receives Top Ranking from <i>US News & World Report</i>	41
The Old Lyme-Lyme Volunteer Connection	21	'Summer Sculpture Showcase 2016' on View at Studio 80 through August	42
Sound View Summer Concert Series	22	Old Lyme Visiting Nurse Association	42
Tax Collector's Notice	23	Celebrating the 30th Anniversary of Midsummer Festival at the OLPGN Library	43
Sound View Improvements Project	24	The Florence Griswold Museum	44
Public Informational Update	24	Town of Old Lyme Primary Results	45
Estuary Council Regional Senior Center	25	Discover Buried Treasures In Phoebe's BookCellar	46
Lyme's Senior Center	26	The Only Bookstore In Town	46
The Sound View Beach Association	28	Tree Commission	48
Town Clerk's Office	29	Assessors Office	48
Old Lyme Historical Society	30	Streetlights	48
Rosé	31	Old Lyme Land Trust Celebrates 50 Years of Keeping Tomorrow Green	50
Leukemia Cup Regatta	32		
SmartER Appointments Now Available at Shoreline Medical Center	32		

The Lyme Tree, A Woman's Exchange Of Old Lyme

Located in the Old Lyme Marketplace

We are a non-profit gift shop specializing in unique handmade items. Open Monday-Saturday 10 am to 4 pm. We have new items coming in weekly.

Also, we are a great place to volunteer. Please stop in to see the shop!

SELECTWOMAN'S CORNER...continued from page 1

weeds in Rogers Lake have gotten so thick that they have had a huge negative impact on the recreational and economic aspect of the lake. The plan includes ongoing water monitoring tests throughout the season, and depending upon the permit, may have other requirements. Treatment, if done, will include notification on the town website, as well as any other required notifications.

The **Route 156 Bike Path and Sound View Improvements** committee has submitted the Final Design for the project, and hopefully has received approval by the time of this publication. An inspection firm has been identified and negotiations on scope of work and fees have begun. A final public information meeting was held on April 25 at the Shoreline Community Center, and there were about 45-50 people in attendance. The engineering firm reviewed the plans which include new 6' wide, ADA accessible sidewalks on both sides of Hartford Avenue from Bocci Lane to Pond Rd., ADA compliant crosswalks, bumpouts that will house trees, park benches, bike racks, etc., new decorative street signs, and decorative banner poles. There was a concern for lost parking spaces expressed at the meeting, though in total, the area will go from 371 parking spaces to 353 parking spaces, including private parking lots, the town lot and street parking. The committee looked for all the parking it could accomplish, and it was important to consider safety,

ADA accessibility and aesthetics in the plan. Once the final design is approved by ConnDOT, the project will go out to bid with a construction start date of September 6th, the day after Labor Day! The final cost will go to a Town Meeting for approval sometime this summer. The entire project has been funded through a DOT Enhancement fund, with 80% reimbursement.

The **Boathouse/Hains Park Improvements Committee** has made great progress in their endeavor to build the newly designed, single story boathouse. The ZBA approved three required variances, which included height and setback distance from lot lines. The next approval is expected from the Zoning Commission for a special permit. The basketball court will be relocated closer to the Hains Park bathrooms, and the bathrooms will be redesigned to better utilize the existing footprint, provide ADA accessibility, and explore the possibility of year round use for the benefit of all residents. Construction will start as soon as reasonably feasible once all approvals are secured.

The **dredging of the Four Mile and Black Hall Rivers** has been completed. This was funded through a grant from the State of CT, therefore our property taxes were not impacted by the cost of this project. **Special thanks once again to the Harbor Management Commission for their hard work in securing the grant and successfully getting the job completed.**

Continued on page 4

William Pitt Sotheby's INTERNATIONAL REALTY

LYME: A gracious 18th Century residence with elegant proportions has impeccably transitioned through extensive renovations into a fabulous gentleman's farm. N10036124 Offered at \$1,595,000

INTRODUCING

LYME: The Stephen Peck House c1830 is listed on Connecticut's Freedom Trail. Two story foyer, five fireplaces, stunning perennial gardens and blue-stone terraces make this an exceptional village home. N10129246 Offered at \$860,000

Experience The Value of Partnership

2015 Sales of \$45,996,500 A Banner Year!
 #1 Team Companywide 2013, 2014, 2015
 #1 Dollar Volume Closed
 YTD 1/1/15-12/31/15 in all of Middlesex and New London Counties *
 Licensed in Connecticut and Rhode Island

JENNIFER & JANE ASSOCIATES
 Essex Brokerage
 Jennifer Caulfield 860.388.7710
 Jane Pfoffer 860.227.6634
 jenniferandjane@wpsir.com

williampitt.com
ESSEX BROKERAGE | 13 MAIN STREET | 860.767.7488
OLD LYME BROKERAGE | 103 HALLS ROAD | 860.434.2400
 Each Office is Independently Owned and Operated *According to Broker Metrics Termination Stats YTD

Earth Care

of Old Lyme
"where vision becomes reality"

Property Maintenance Management and Care Taking Services

MAINTENANCE SERVICES	MANAGEMENT SERVICES
<ul style="list-style-type: none"> • Year Round Landscape & Lawn Care • Dethatching, Core Aeration, & Seeding • Stone Driveways, Edging, & Aprons • Cobblestone, Bluestone, Paver Projects • Drainage Problems Addressed • Stone Wall Restoration & Construction • Retaining Walls & Seawalls • Small Paving Repairs 	<ul style="list-style-type: none"> • Complete 24/7 Property Monitoring & Inspection • Coordinating Deliveries & Postal Needs • Scheduling & Monitoring Tradesmen • Storm Preparation & Clean Up • Evaluating & Scheduling Emergency Repairs • Complete Snow Removal Service • References & Bonding Available

Tired of Unreliable People? Call

David K. Flagge
 Shore Road, Old Lyme, CT
 Fully Insured - Lic. #578608
 Phone & Fax: 860-434-0558

SELECTWOMAN'S CORNER...continued from page 3

The **Town of Old Lyme** is collaborating with **The First Congregational Church of Old Lyme** to present three forums on Climate Change. The Church Environment Committee came to the Town for some feedback and suggestions on this initiative and it turned into a terrific partnership to address a concern for all of us. The forums will take place at Old Lyme Town Hall on Thursday, June 9 and Thursday, June 16 at 6:30 pm, with the last forum on Saturday, June 25 from 10:30 am. The topics will include Long Term Aspects of Climate Change; Emergency Measures, and Insurance, Real Estate and Business Concerns, respectively. These forums will be of great interest to Old Lyme residents considering our proximity to the CT River and Long Island Sound, as well as the impact of Superstorm Sandy. For more information, visit our website, but mark your calendars now. You won't want to miss these forums.

The Lyme Old Lyme Chamber of Commerce, with the cooperation of the Town of Old Lyme, is hosting the **FIRST Osprey Festival**, to be held on Saturday, June 18th from 10:00 am to 8:00 pm. This seaside event will be held on Hartford Avenue between Bocci Lane and Martino Avenue and will include many vendors providing entertainment, kid competitions, lectures on Art and Nature, and local musicians performing throughout the day. For more details about the venue and vendors, visit the LOL Chamber webpage at www.visitoldlyme.com.

Please support the efforts of the **LOL Junior Women's Club** as they continue their **"Love Your Playground"** campaign. The project started as an effort to improve the playground at Town Woods Park, and has grown to include beautiful plans for an ADA accessible playground at Cross Lane. The group has worked hard with a representative from Old Lyme to plan out a safe, age appropriate and accessible facility that is sure to delight many youngsters and their families. Of course, it is quite expensive to create this kind of play space, so your support of their efforts is essential. Representatives from the Junior Women's Club have already presented to the Boards of Selectmen and Finance, as well as the Park and Rec Commission, and have been applauded for their plans, with a commitment to support their efforts. Thank you to those who worked so hard on behalf of the children and families in our community.

Don't forget to subscribe to the Town of Old Lyme website and you will receive all the important information you need by signing up for **News and Announcements**. Also, be sure that you are signed up for our **Old Lyme Alerts** while you are there and you will receive calls, texts or emails when there is an emergency.

On behalf of the entire Board of Selectmen, I wish you a Happy Summer 2016. Enjoy the good weather to come!

Bonnie A. Reemsnyder, First Selectwoman

SHOP SPIRITS & SAVE! • SHOP SEASIDE & SAVE! • SHOP SPIRITS & SAVE! • SHOP SEASIDE & SAVE!

**BEST ROSÉ
TO BEST
CRAFT BEERS!**



SEASIDE WINE & SPIRITS
118 Main Street - Old Saybrook
860.388.3015
Shoreline's Best

Visit our other location
Spirits of Madison
Super Stop & Shop Plaza



**SERVICE • SELECTION • EVERYDAY LOW PRICES • CONVENIENCE
EASY PARKING • WEDDING & PARTY SOLUTIONS • SMILES**

SHOP SPIRITS & SAVE! • SHOP SEASIDE & SAVE! • SHOP SPIRITS & SAVE! • SHOP SEASIDE & SAVE!



THE POWER OF PREVIEWS®

Coldwell Banker Previews International® offers one of the world's best luxury real estate marketing programs.

More Than \$130 Million Daily

Coldwell Banker® sales associates handle an average of \$133.5 million in luxury home sales every day*.

84,000 Agents Globally

There are more than 84,000 Coldwell Banker affiliated sales associates in approximately 3,000 sales offices spanning six continents.

80-Year Legacy of Success

Previews has served the needs of luxury home buyers and sellers since 1933.

Market Your Home with a Global Luxury Leader.



Lyme **\$4,750,000**
Four waterfront acres w/pool & deep-water dock. Beautifully crafted Mount Vernon Colonial w/ spectacular CT River views.
Judy Schaaf 860-227-3688



Old Lyme **\$3,200,000**
Outstanding, 4BR waterfront with incredible views, deep-water dock and IG pool. Rich detail and superior craftsmanship.
Maddy Mattson 860-575-4344



Old Lyme **\$2,100,000**
Spectacular sunsets are enjoyed from this privately sited waterfront home with separate country carpenter's barn & dock.
Evan Griswold 860-395-4420
Jodi Strycharz 860-884-3011



Old Lyme **\$1,975,000**
Gracious Lt. River waterfront privately sited on 6 acres. Guest house, IG pool & patio complete this beautiful property.
Jodi Strycharz 860-884-3011



Lyme **\$1,495,000**
Stunning views & wrap-around deck are enjoyed from this "Smart House" on Hamburg Cove with dock and deep-water mooring.
Joe Rhodes 860-227-0921



Old Lyme **\$1,195,000**
Magical river views at this Village waterfront home with antique and modern-inspired interior. Pool, boat house and dock.
Terry Kemper 860-908-7820

PREVIEWSADVANTAGE.COM
COLDWELLBANKERHOMES.COM



*Sales volume based on closed and recorded buyer and/or seller transactions of homes sold for \$1 million or more as reported by affiliates in the U.S. Coldwell Banker® franchise system for the calendar year 2013. US\$6 Total volume calculated by multiplying the number of buyer and seller sides by sales price. Agent and office numbers for the Coldwell Banker Previews International program include all Coldwell Banker-branded offices in the Coldwell Banker franchise system as of December 31, 2015.
©2016 Coldwell Banker Residential Brokerage. All rights reserved. Coldwell Banker Residential Brokerage® supports the principles of the Fair Housing Act and the Equal Opportunity Act. Operated by subsidiary of RTI, LLC. Coldwell Banker, the Coldwell Banker logo, Coldwell Banker Previews International, the Coldwell Banker Previews International logo and "Dedicated to Luxury Real Estate" are registered and/or unregistered service marks owned by Coldwell Banker Real Estate LLC. Two estate agents affiliated with Coldwell Banker Residential Brokerage are independent contractor sales associates and are not employees of Coldwell Banker Residential Brokerage.

Midsummer, Summer 2016

It's the 30th Anniversary of this much-loved event.

Be a part of this special celebration – July 29 and 30. This two-day event, a quintessential New England celebration for all ages, takes place in the heart of Old Lyme's historic district. All activities take place at nine locations all along Lyme Street: the Florence Griswold Museum, the Lyme Art Association, the Old Lyme Inn, the Lyme Academy College of Fine Arts, Studio 80 + Sculpture Grounds, the Old Lyme Historical Society, the Center School lawn, the Old Lyme - PGN Library, and the Shops of Lyme Street.

To shake things up for this special year, sites are offering new events along with your old favorites! Channel your inner hero or heroine and complete your Jedi training with special guest Rey on the Library lawn! A meet and greet and photo op will follow.



Meet Rey, the Jedi warrior at the Library.

At the Florence Griswold Museum, join in an interactive theatrical performance. Ms. Karen and Chester, the costume trunk, fire up the stage for a royal story adventure! Her kingdom is burning! There's a dragon to track. She must rescue her prince, wearing only a sack! This Princess reminds us, through thick and through thin, that love conquers all and beauty comes from within!



Along with new activities to celebrate this big anniversary, you'll still find your favorites like art exhibitions and sales, musical performances, book signings, and hands-on kids' activities, dog show, and of course, artisan vendors and Market en Plein Air!

The Old Lyme Historical Society hosts weaving demonstrations by Area 4 of the Handweavers Guild of Connecticut. Learn about hand-manipulated weaves and watch as a Connecticut River Blanket is crafted.

Continued on page 7



**Children's
Dental
Associates**
OF NEW LONDON COUNTY

The American Academy of Pediatric Dentistry recommends children be seen by a **Pediatric Dentist** by the **First Tooth** or **First Birthday!**

Establish your child's dental home now and call us for an appointment!

131 Boston Post Road • East Lyme
860.691.5014

"Creating happy healthy smiles one child at a time."

www.ChildrensDentalNLC.com



simply
beautiful.

salonpure

For your beautiful experience, call us at 860.598.9032
11 Halls Road in Old Lyme at the Lieutenant River Center

MIDSUMMER...continued from page 6

Studio 80 + Sculpture Grounds becomes a fashion runway as artist Susan Hickman and designer Anna Lucas present their latest designs. Lucas focuses on sustainable fashion and offers a great vintage collection created out of recycled and upcycled materials. Described as having a “playful and experimental” style, Hickman’s fashions often have a sense of the theatric and come to life with the combination of a woman’s movement and her personality.

There will be an onsite boutique featuring a wide variety of creations for sale by both artists throughout the event.

Visit OldLymeMidsummerFestival.com for a complete list of events and vendors and like Old Lyme Midsummer Festival on Facebook for up to the minute notifications and information.

Old Lyme’s own Braiden Sunshine will perform as part of this special anniversary of the Midsummer Festival. Bring a picnic and join us Friday, July 29 at 7:00 for the fun-for-the-family performance.



Old Lyme Country Club Celebrates Its 100 Year Anniversary

The Old Lyme Country Club is celebrating its founding in 1916 with a season long schedule of events. The club, organized in 1916 as a 6 hole golf course and incorporated in the 1920’s with an expansion to 9 holes, continues as a key shoreline institution to this day. Throughout its long history it has served its member’s social and athletic needs as well hosting many community events. The club’s membership has included such well known figures as Walker Evans, the Depression

era photographer & Dominick Dunne the celebrity author. The club has survived two World Wars, the Great Depression and most recently, the Great Recession. Over the years the club has continued to evolve. It has added tennis courts, paddle tennis courts, a heated near Olympic size pool in 2005 and, most recently a bocce court. With a growing membership it is looking forward to another century of prosperity.



OUR CENTENNIAL YEAR

The Old Lyme Country Club is celebrating 100 years of sport, family & friendship! Special membership opportunities will be available throughout 2016 which will allow full use of all our amenities: golf, tennis, pool, paddle tennis, fine dining and much more.

JOIN OUR CELEBRATION

Visit our website or call 860-434-1639 ext 2 or email admissions @oldlymecc.com.



Duck River Garden Club

Duck River Garden Club planted an oak tree at a town park in Old Lyme. We bought one of the four trees planted in conjunction with the local Junior Woman's Club and the Old Lyme Tree Commission. So we planned, shared the planting day and now will work together to water and maintain the trees.

Looking for New Members to Share the Fun!

A note from President Barbara Rayel ...
As a primary school teacher for over 30 years my goal was always to foster a love of learning. Out of the classroom, I am still drawn to people who are excited to learn, no matter their age. Now as I serve as an active member of Old Lyme's Duck River Garden Club I find myself surrounded by teachers and learners of anything garden related. For example, we spent an evening meeting last month at Ballek's Farm learning how miniature gardens are put together to delight young and old alike. What a fun evening! Our annual May

plant sale weekend was another example of sharing knowledge with community garden shoppers. Folks learned about what to plant to attract pollinators, how to get a good yield from your tomatoes and what annuals are good companions for planting in a large pot, to name a few. Each year members learn how to prune roses and when to mulch; while maintaining our 8 town garden sites. Several of us have worked with school aged children to teach about planting bulbs, starting seeds and enjoying bird watching. Many thanks to local businesses for their participation in our Welcome Garden initiative to beautify our town even more. As all the above activities are kicking into gear this spring we invite interested teachers, learners or just nature enthusiasts to consider joining the ranks as a Duck River Garden Club member. We look forward to telling you more about our club.

Barbara Rayel, Club President 860 434-2354
Kathy Burton, Vice President 860 434-8024.



Left to Right: Karen Geisler, Sally Howley, President Barbara Rayel, Kathy Burton.

COLDWELL BANKER RESIDENTIAL BROKERAGE

Proven Results in Every Market!



41 Neck Road - \$1,599,000
Stunning CT River View



101 Lyme Street - \$735,000
Reinvented village carriage house

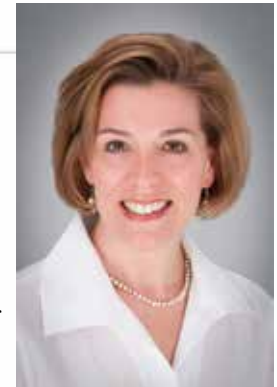
Nancy Mesham

Previews Specialist

860-227-9071

Top 50 CT/Westchester
CBBB 2015

CT Magazine Five Star Realtor
www.nancymesham.com



120 Blood Street - \$500,000
Historic jewel box



50 Grassy Hill - \$389,000
Living large lakeside!



54 Hickory - \$469,000
Year round at the lake!



2 Millers Way - \$719,000
Stunning colonial!

View these properties at nancymesham.com ~ Call Nancy at 860-227-9071



86 Halls Road • Old Lyme, CT 06371 • 860.227.9071

© 2014 Coldwell Banker Residential Brokerage. All Rights Reserved. Coldwell Banker Residential Brokerage fully supports the principles of the Fair Housing Act and the Equal Opportunity Act. Operated by a subsidiary of NRT LLC. Coldwell Banker, the Coldwell Banker Logo, Coldwell Banker Previews International, the Coldwell Banker Previews International logo and "Dedicated to Luxury Real Estate" are registered and unregistered service marks owned by Coldwell Banker Real Estate LLC.

ColdwellBankerMoves.com



Smith Bros. Upholstery

Sectionals | Sofas | Chairs | Recliners

- Strength & Durability
- Superior Comfort
- Custom Made to Order
- Many Style Choices



Lifetime
Warranty



NATIONWIDE
FURNITURE
DELIVERY

3 Beautiful Furniture Showrooms



KLOTER FARMS

216 West Rd Ellington, CT
860-871-1048 KloterFarms.com
Mon & Wed 9-6, Tu & Th 9-7
Fri 9-5, Sat 8-5, Closed Sun

*FREE DELIVERY CT, MA, RI \$1500 min. purchase. Extra charge for Cape Cod, MA.

Guests Enjoy a Great “Night in Havana” at Old Lyme’s Bookworm Ball

The topical and tropical Old Havana theme of the Old Lyme Library’s Bookworm Ball on March 19th was a hit with over 150 guests who attended the festive event at the Old Lyme Country Club, decorated for the occasion with an extravagant display of colorful flowers, Cuban flags and other memorabilia. Parked at the entrance was a 1946 Ford Super Deluxe 4-door sedan, a reminder of the classic cars still cruising Havana’s famous Malecon. The evening’s signature drink was mojito, Cuban sandwiches were served and dominoes adorned the tables. Silent and live auction bidding added to the evening’s excitement – and proceeds. Dancing to the music of the big band era, courtesy of the “String of Pearls” band was a special highlight.

Organizers of the fund-raiser expected that the end-of-winter, timely and tropical Havana theme would draw a large crowd. But Committee Chair Leslie Massa said “the President’s historic visit to Cuba on the very same weekend as the Bookworm Ball helped create some extra buzz around the whole idea of traveling to Cuba – even in our imaginary way.” “We appreciate having White House help us out that way,” she joked.



Alan and Cheryl Poirer.



Barbara and Dick Shriver.



Fred and Andrea Fenton.



Mark and Linda Alexander.

Continued on page 11

Call today for a tour: (860) 345-3779

We are Part of a Wonderful Community

Richard and Ellen Klinck always wanted to be part of a real community—and now they are. The Saybrook at Haddam offers them a care-free and relaxed lifestyle, so they can fill their days visiting friends and family, and taking part in plenty of activities such as tai chi. The best part is no more chores and no more cooking.

For residents who need more assistance with daily living, the professional, experienced staff is ready to meet their needs.

Also featuring **Safe Harbor**, a special care neighborhood for residents with Alzheimer’s or dementia.



Richard and Ellen Klinck enjoy tai chi and many other activities at The Saybrook at Haddam.



An Assisted Living Retirement Community

1556 Saybrook Road, Haddam, CT 06438

www.TheSaybrookAtHaddam.com

BOOKWORM BALL...continued from page 10

Guest attire reflected the theme in sometimes elaborate ways. Among the colorfully embroidered traditional style dresses, Panama hats and Guayabera shirts, at least one Chiquita banana headpiece and a Fidel-style cap and beard were spotted.

“We know we’ve raised at least \$17,000,” said Massa, with auction and sponsorship commitments still being tallied. All net proceeds from the Bookworm Ball are dedicated to the financial support of the Library’s programs and collections.

The Friends of the Old Lyme-Phoebe Griffin Library is a non-profit organization that this year pledged to raise more than \$40,000 to buy new books and bring educational programs for tots, teens, and adults to the library. The Friends depend on sponsorship support to make this major fundraiser possible, and this year that support was provided by Paul Burdick Oil, Jeffrey N. Mehler CFP, Hamilton Point Investments, Essex Savings Bank, All Pro Automotive, Quality Printers, Reynolds Garage & Marina, LymeLine.com, The Hartmann Group, Mark Massa/AXA Advisors and TheTimes/theday.

Old Lyme Animal Shelter



On October 24, 2015 the Old Lyme Animal Shelter held a sign reveal and “pay it forward” fundraising event thanks to the group Presents for Paws.

Presents for Paws is a nonprofit organization located in the state of Connecticut which is recognized as a 501(c) (3) that helps out local shelters however they can. This amazing group raised enough money to design and install a beautiful brand new sign for the shelter. The profits from our event went to the East Haven Animal Shelter to present them with a new Meet-nGreet Pavillion for potential adopters to get to know their new dog. During our sign revealing event we had music by BruLou Tunes, food from Bureau’s sugarhouse, Deep River snacks, and some awesome vendors including, K9 Kouture, See what I Saw, Something Winey, and many more. The event was a huge success, from puppies and kittens, to kettle corn and dog smooches, the community really came through to support us and now we have one of the most beautiful signs in the state! Thank you all for your support.

Colette Harron
860.304.2391
charron@wpsir.com

Diamond Award 2015
#1 Dollar Volume 2015
#1 in Units Sold 2015

EAST LYME • \$2,495,000

Magnificent 40 acre Estate in the rolling hills of Lyme. Swimming pool, tennis/basketball court with two story barn and orchards.

N10111106

OLD LYME • \$745,000

Only minutes walk to “your” private, beautiful, white sandy beach from this charming year round home.

N10119622

LYME • \$632,000

Total renovated 1865 home, located in one of Lyme’s most beautiful and desirable areas of natural beauty.

N10119421

OLD LYME • \$405,000

This two Bedroom, two Bath home abounds with character and charm. This home is an ideal country retreat.

N10092665

colletteharron.williampitt.com
ESSEX BROKERAGE | 13 MAIN STREET | 860.767.7488
OLD LYME BROKERAGE | 103 HALLS ROAD | 860.434.2400
Each Office is Independently Owned and Operated.

Lyme Academy College of Fine Arts

Bridging the Arts: Kiki Smith: Squatting the Palace.
Tuesday, June 21 at 4 pm, The Kate, 300 Main Street, Old Saybrook. Tickets \$15 per film. *Bridging the Arts* is a curated film series co-sponsored by Lyme Academy College of Fine Arts and The Kate. The series will feature a selection of art films produced by the highly-regarded Checkerboard Film Foundation, Inc. and include a brief lecture before each film. For more information visit: http://www.lymeacademy.edu/index.php/community-engagement/film_series/kiki_smith_squatting_the_palace/

Registration Now Open for Adult Summer Classes, Workshops and Residencies. Visit our website for more information and to register online: www.lymeacademy.edu.

John Stobart Exhibition. May 26 – June 25. Monday – Saturday, 10 am – 4 pm.

Gallery Talk by John Stobart. June 23, 6 – 8 pm.
 Reception at 6 pm. Gallery Talk at 7 pm. \$15 for Reception and Talk. Limited Seating. Reservations Required. RSVP: Kristen Brady, kbrady@lymefcs.newhaven.edu.

ArtsBall 2016 – Annual Benefit for Student Scholarships. Saturday, June 4, 6 – 11 pm. *Starry Starry Night, Bedazzle in White!* Visit our website for more information and to purchase tickets online: www.lymeacademy.edu.

Old Lyme Revisited: Exhibition by Alumni Peggy and Tom Root. July 7 – August 13. Monday – Saturday, 10 am – 4 pm.



Peggy Root, *Open Gate*, oil on linen, 52x26".

THE CHEESE SHOP
of Centerbrook



Boating & Picnic Season Has Arrived!

We have the largest selection of imported and domestic cheeses. Try Before You Buy!

We also carry, Italian and domestic pastas, breads, pates, oils, vinegars, Scottish smoked salmon, Parma prosciutto, and many other specialty meats. We do gift baskets and party trays.

33 Main Street, Centerbrook, CT 06409
860-767-8500

Mon-Fri 10am - 6pm Saturday 9:30am - 5:30pm
www.cheeseshopcenterbrook.com

Bodhi Naturopathic
Niantic Acupuncture & Family Wellness





Maggie Barili RN, LAC. Stephanie Roers Dr. Sarah Zambarano, RN ND
 Lic.Acupuncturist, Herbalist Lic.Massage Therapist Naturopathic Doctor

Serving Our Community

As a team, we specialize in Family Care for all ages: Internal, Preventive, Sports & Orthopedic Medicine, Pain Management, Addiction, Digestive Health, Disorders of Stress, Anxiety and much more...

17 Hope Street ◆ Niantic, CT
 Maggie & Stephanie: 860 451-5558
 Dr. Sarah Zambarano 860-451-9650
www.NianticAcupuncture.com

(Many Insurances accepted, some as out of network)

WITH THIS YEAR'S WACKY WEATHER PATTERNS, IT PROBABLY WILL BE A SUPER HOT JULY!

Be Ready... it's Affordable!



CT LIC# S10303724

**Your Local Rudd Dealer
FREE Estimates**

CENTRAL AIR CONDITIONING

HOUSE SIZE Square Footage	MODEL	TONNAGE	FOR AS LOW AS
850 - 1000 SF	RAKA024JAZ	2	\$5,100.00
1,000 - 1,250 SF	RAKA030JAZ	2.5	\$5,350.00
1,250 - 1,500 SF	RAKA037JAZ	3	\$5,600.00
1,500 - 1,750 SF	RAKA042JAZ	3.5	\$6,200.00
1,750 - 2,000 SF	RAKA048JAZ	4	\$6,400.00
2,100 - 2,500 SF	RAKA060JAZ	5	\$7,100.00

Price Guide for basic complete installation. Two-day installation in most cases.

THREE GENERATIONS, OVER 60 YEARS OF CONTINUOUS SERVICE



Automatic Delivery • Burner Installation • 24 Hour Emergency Service

\$START \$AVING NOW!

**CALL TO GET ON OUR MAILING LIST
FOR THE 2016/17 HEATING SEASON**

447 Spencer Plains Road, Westbrook, CT 06498



860-388-2298

CT LIC# S10303724 HOD# 0000591



Visit moronioil.com to save 10-25% off your electric bill

Lyme-Old Lyme Chamber of Commerce Hosts Summer Events, Meetings, New Initiatives and More



The Lyme-Old Lyme Chamber meets on the third Wednesday of each month to offer the opportunity for business professionals to network with each other and discuss ideas related to the economic vitality of our towns. Please join us at any or all of these meetings – there is no charge for our ‘cocktails and hors d’oeuvres’ meetings:

June 15 at the Old Lyme Country Club on McCurdy Road. This is our annual dinner meeting at which the chairman will present his report, officers for the new year will be appointed and scholarships will be presented to local students. Dinner is \$25 per person and reservations are required by June 8.

There will also be gatherings for cocktails and hors d’oeuvres during the summer on July 20 and August 17. Please check the Chamber website for location details.

If you are thinking about becoming a member, do come to any meeting as a visitor. We would be delighted to welcome you and show you how much membership at just \$50 per year has to offer and how it can benefit your business.

The Lyme-Old Lyme Chamber of Commerce is collaborating with local realtors who are also Chamber members to launch a new initiative titled, “Wake Up to Lyme-Old Lyme.” This program is a Chamber-wide effort to introduce both prospective newcomers and new residents

to the businesses in our area. The concept is a revitalization of the tremendously popular Welcome Wagon of days gone by. It is a way to welcome newcomers to our towns, opening new doors for them and showcasing our businesses to potential new customers.

Donations are actively being sought for our baskets of coupons, brochures, incentives to visit your place of business, specialty items with logos – in other words, something to drive customers through your doors. If you would like to participate in this program, please drop off your box of promotional incentives (25-50 of each item) at Nightingales Acoustic Café on Lyme Street. This program is intended

Continued on page 15



East Lyme Psychological Associates

Psychological & Psychiatric Services

Serving adults, adolescents, children and families · Individual, couple, and family therapy

Psychiatric assessment and medication management

Adoption competent therapists work with adoptees and/or families

Psychological evaluation for adoption related issues, personality functioning, and treatment planning

29 Chesterfield Road, East Lyme, CT
860-739-6974



LYME CENTER FOR ARTS PROGRAMMING

JOIN US THIS SUMMER FOR

- Adult Summer Courses
- Artist Lectures
- Summer Residencies
- Workshops
- Curated Film Series
- Pre-College Classes

JOHN STOBART EXHIBITION
May 26 – June 25
 Gallery Talk | June 23, 6 – 8 p.m.
 RSVP: kbrady@lymefs.newhaven.edu



Center for Arts Programming
University of New Haven

For more information:
www.lymeacademy.edu

ARTWORK: John Stobart, Cincinnati: A Panorama from Covington's Riverfront in 1866



for Chamber members so please consider becoming a member if you would care to join in the fun. For more information, email gstevens@musicnowfoundation.org

The Chamber is hosting a new 'Osprey Festival' at Sound View on Saturday, June 18, from 10 am to 8 pm. This is an exciting, family-oriented seaside festival that honors the majestic Osprey and celebrates many of the great aspects of Lyme and Old Lyme. The Chamber is partnering with the Connecticut Audubon Society's Osprey Nation, the Roger Tory Peterson Estuary Center, Lyme Academy College of Fine Arts of the University of New Haven, and the MusicNow Foundation to bring together art, music, nature and events.

A portion of Hartford Avenue in Sound View will be closed off for the festival. The morning and early afternoon will be focused on young families with free carousel rides, kid's competitions, school bands, and young local musicians. The afternoon will be geared towards the older population in Lyme and Old Lyme with lectures from world-renowned speakers on art and nature, plus a performance by a wind and brass ensemble. As the evening rolls in, the tone will change to create a night for all ages with some top-notch local bands, and some special games in the street. This inaugural annual event is designed to kick-off the summer season and attract residents from our two towns as well as the surrounding communities.

For more information about this event, visit www.ospreyfestival.com or email info@ospreyfestival.com.

For details of monthly meetings and other Chamber-sponsored events, visit www.VisitOldLyme.com and don't forget to Buy Local to support businesses in our community. For questions regarding the Chamber, contact Chamber President Mark Griswold at grismark@aol.com or Vice President Olwen Logan at editor@lymeline.com.

COLDWELL BANKER

RESIDENTIAL BROKERAGE

The Spring Market
is Here!

Laurie Walker

860.227.5571



LYME

Classic Victorian w/modern day flair! Horse Barn, Guest House & Pool on over 3 acres! Very Special! Listed w/Joe Rhodes \$1,195,000



OLD LYME

Gracious, beautifully maintained 4 BR Colonial w/large, level backyard. Sun-filled Rooms, Gleaming wood floors, \$479,000



OLD LYME

Pictureque Custom Home with Post & Beam 3 Bay Barn with office on 3 acres. Listed w/Lynn Bocian \$659,000



OLD LYME

Exceptional Residence in private, neighborhood setting. Gourmet Kitchen, Heated Sunroom, Master Suite & more! \$550,000



OLD LYME VILLAGE

Wonderful Location on Library Lane. Very pretty kitchen w/granite counters, Easy one floor living. \$550,000



OLD LYME

Spacious 4 BR home with beautifully updated Kitchen & Baths. Private backyard w/large deck. \$375,000



OLD LYME

Relaxing Marshview Listed at \$450,000 **SOLD!**



OLD LYME

Beautifully Renovated Home Listed at \$479,000 **SOLD!**

Old Lyme Marketplace
Old Lyme

Laurie Walker
860-227-5571 cell



"Hawaii Five.0" 5k Road Race Will Help Send Our Student Musicians To Pearl Harbor Commemoration



Early in the morning of July 30, 2016, runners and walkers from all over the area will converge on Old Lyme Village for a special road race: the "Hawaii Five-0" 5K. The race course, flat and very fast, will start in front of Lyme-Old Lyme Middle School, proceed past the entrance to Lyme-Old Lyme High School, and then travel down Lyme Street and McCurdy Road and back again.

The Hawaii Five-0 5K is a fundraising event for Friends of Music - Lyme/Old Lyme, which is working to help defray the costs of sending student musicians from Lyme-Old Lyme High School to Hawaii this coming December, to represent Connecticut at Pearl Harbor commemoration ceremonies. On December 7, high school bands and choruses from the United States and Japan will gather together in Hawaii to perform these ceremonies, which will mark the 75th anniversary of the bombing of Pearl Harbor and the beginning of United States involvement in World War II. Among those school groups will be 105 members of the Lyme-Old Lyme High School Band and Chorus, the only school in Connecticut - and one

of only two from New England - to be participating in the event. These student musicians will perform together on the pier of the Battleship *Missouri*, a World-War II-era ship that was engaged in the battles of Iwo Jima and Okinawa. It was on the *Missouri*, in Tokyo Bay in September 1945, that the papers of surrender were signed by representatives of the Allied and Axis powers - formally ending World War II. The *Missouri* is now docked in Pearl Harbor as a permanent memorial and museum, providing a fitting bookend to the story of the bombing on December 7, 1941, that launched US involvement in the war.

How Can You Help?

- Run or walk in the race. The \$25 registration fee will go directly to the Friends of Music Hawaii fund.
- Become a sponsor. We are seeking corporate and private sponsors to support the race, and reciprocal signage/publicity for your company is available at various levels. Contact Kristina White for more details: kbjwhite@sbcglobal.net.
- Help out on race day. Many volunteers will be needed to make the day run smoothly!

Continued on page 17

TRUST YOUR CAR TO THE REPAIR SHOP MORE PEOPLE TRUST...

We are a full service garage dedicated to quality work and service.

"The Only Call You Need For Quality Service & Repairs"

AUTO SERVICE of Old Saybrook, Inc.

**We have Senior Citizen Day Every Day!
We Offer 10% OFF Repairs and Service up to \$50.00 Maximum.**



We employ ASE Certified Technicians

Servicing Domestic & All European Cars Including Mercedes, BMW, Jaguar, Audi, Saab, Volvo & VW



860-388-6838

From oil changes & scheduled maintenance to engine repair or replacement, we can provide complete mechanical & electrical service to your vehicle.



**4 JADE COURT • OLD SAYBROOK
HOURS: MON. - FRI. 8 a.m. - 5 p.m.**



HAWAII FIVE.O 5K...continued from page 16

- Come out and show your support by cheering on the runners and walkers!

Go to www.friendsofmusicLOL.org and navigate to the 5K page to sign up or to get more information; or email friendsofmusiclol@gmail.com.

Registration for the Hawaii Five-0 5K is open now, and the first 150 registrants will receive commemorative T-shirts. There will be awards for overall and age-group winners. Participants may run or walk the 5K, and strollers will be allowed — so everyone can take part! Planned post-race activities include refreshments, music, massages, vendors, and more!



Friends of Music – Lyme/Old Lyme is a nonprofit organization of parents, teachers, and community members, whose mission is to promote the advancement of music education and performance for the students in Lyme–Old Lyme Public Schools (Regional District #18) through scholarship awards and support to the music departments at all levels. As a registered 501(c)3 nonprofit organization, Friends of Music can accept matching funds from employers.

The Old Lyme Town Band Summer Concert Series

Enjoy a fine summer evening with a concert featuring the Old Lyme Town Band under the direction of Carolyn Whinnem. For band information, and concert dates visit our website. Oldlymetownband.org.

Old Saybrook Green, Wednesday, June 29 at 6:30 pm.

Soundview, Thursday, June 30 at 7:00 pm.

Mystic Green, Tuesday, July 5 at 7:00 pm.

Point O' Woods, Tuesday, July 12 at 6:45 pm.

Old Lyme South Green, Sunday, July 17 at 4:00 pm.

Old Lyme Fireworks, Saturday, July 30 at 7:30 pm.

**Want to Reach Every Home
& Business in Town?**

Call Betty Martelle at (860) 333-7117

MARK REEVES, BUILDER
860-388-3825

Time for those Spring Projects!



New Homes • Whole House Remodels • Additions
Kitchens • Bathrooms • Basement Conversions
Siding & Windows • Entertainment Centers
Flooring • General Remodeling



Look me up on
CT LICENSE # 538583 & 10263
FULLY INSURED

MARKJREEVESBUILDER@COMCAST.NET
WWW.MARKREEVESBUILDER.COM

LAYSVILLE
HARDWARE

**A Complete Line of
Hardware & Paint Supplies**

Power Tools • Diesel • Lawn & Garden Supplies
Gas Grills • Electrical & Plumbing Supplies
Builder's Hardware • Blades Sharpened
Glass Cut & Window Repairs

Rentals: Power Washers • Paint Sprayers • Rug Shampoers

860.434.7727

171 Boston Post Rd, Old Lyme

Sign up for **savings**
with our E-Newsletter
@

laysvillehardware.com



The 80th Annual White Elephant Sale Opens Friday, July 8th

This is a very special year for the First Congregational Church of Old Lyme because the Ladies Benevolent Society is celebrating the 80th anniversary of the perennially popular White Elephant Sale (WES). Clear these dates on your calendar right away to be sure not to miss this amazing event – the sale will be held on Friday, July 8, from 9 am to 2 pm and Saturday, July 9, from 8 am to 12 pm.

The first rummage sale was held in one room of the church in 1920 and raised \$200, which was a surprisingly large amount of money at the time. In 1936, the name White Elephant Sale was given to the annual event and has been used ever since thus creating this 80th anniversary. During the 1950s, the sale briefly expanded to include a country fair, horse show, and square dance, but, in recent decades, the sale adopted its current format and has become the two-day tradition we know today.

For those new to the town or folk who have never participated, this is one of the main events on both the town and church calendars. It all starts with the intake period when unwanted items from your house or yard – perhaps your basement, attic or closets – can be dropped off at the church. For a full list of items that can be accepted and also, those that cannot, visit



The crowds await the first strike of 9 am when the White Elephant Sale begins.

the church's website at www.fccol.org and click on White Elephant Sale and then Intake List.

Intake begins this year on Thursday, June 23, and runs daily from 9 am to 2 pm through Friday, July 1. There will also be three

Continued on page 19

CHERYL AIUDI & SON^{LLC}

Family Fuel Oil



HOD License #0001103

Call For 2016-2017 Offerings

A FANTASTIC DEAL!

Serving the Entire Shoreline

860-661-5126

We Accept Cash, Check and Most Credit Cards

Our Family has been Servicing Families, Commercial & Industrial Facilities Statewide for over 70 Years!

WHITE ELEPHANT SALE...continued from page 18

evening intake sessions from 6 to 8 pm on Thursday, June 23, Tuesday, June 28, and Thursday, June 30.

Garage, tag and rummage sales may be every day affairs, but few – if any – can match the size and color of this one. The sale items are organized into some 24 departments with everything from sporting goods to boutique items, books to furniture, art to electronics, dishes to shoes, clothes and toys to antiques and tools – all spread out in separate departments in tents and inside the church.

The WES has grown so large that it has become a true “community event” since many of the donations are from non-church members and a significant number of the volunteers are also from outside the church. Large crowds line up to wait for the church’s bell to strike at 9 am on the Friday when the sale begins. The second day starts earlier at 8 am but still draws a substantial crowd since most departments offer their remaining items at half-price on the Saturday.

The sale raises an extraordinary amount of money – almost \$80,000 in 2015 – for missions and good works both locally and throughout the world. Some of the beneficiaries include food pantries, health organizations, family support centers, children’s programs, literacy volunteers, affordable housing, and disaster relief worldwide.

For more information about the sale, to arrange pick-up of large items or if you would like to volunteer to help in any capacity – whether with intake, the sale itself, or clean-up – call the church office at 860.434.8686.

See you at The Sale!

Here’s a summary of items that are / are not accepted by the White Elephant Sale.

Items that will GLADLY be accepted [Quality Please]

- Antiques, Fine China, Silver
- Appliances, Small (Working)
- Art, Sculpture, Posters, Frames
- Automobiles, Trucks [call church]
- Baskets
- Bedding, Linens
- Boats, Canoes, Kayaks
- Bicycles, Tricycles
- Books: Children’s, Non-Fiction, Fiction
- Clothes: Child’s, Men’s, Women’s Fine, Fashion, Vintage, Costume & Accessories
- Collections
- Computer Hardware (working)
- Christmas Decorations
- Curtains, Drapes
- Electronics (Working)

Continued on page 20



THE HIDEAWAY RESTAURANT & PUB

Old Lyme Shopping Center
Exit 70 off I-95, Halls Road, Old Lyme
860-434-1455 or 860-434-3335

Serving Sunday Breakfast
10 am - 3 pm

Lunch Specials 11 - 3
At the Bar \$6 Lunch, \$2 Drafts

THURSDAY NIGHT “WING NIGHT!”

50% ANY ENTREE!	\$10 OFF TOTAL BILL!	\$5 OFF TOTAL BILL!
Buy One Entree at Regular Price, Get 2nd of Equal or Lesser Value 50% Off With this coupon. One coupon per table. Excludes tax and gratuity. Not valid with other offers or on holidays. Expires 7/23/2016	Of \$50.00 Or More With this coupon. One coupon per table. Excludes tax and gratuity. Not valid with other offers or on holidays. Expires 7/23/2016	Of \$25.00 Or More With this coupon. One coupon per table. Excludes tax and gratuity. Not valid with other offers or on holidays. Expires 7/23/2016



Steaks • Seafood • Pasta • Sandwiches and More!

Register Now!

Summer Tennis

for Kids Ages 5-16

Monday - Friday Sessions
June 20 - August 19, 2016

- Half Day: 9am - 12pm
- Full Day: 9am - 4pm (Includes lunch & swimming)
- High Performance Program (Advanced): 12:30pm - 4pm



22 Colton Road
East Lyme, CT
lymeshores.com



Register at:
(860) 739-6281
lymeshores.com

CT License
E1-123441

SICURANZA ELECTRIC, LLC



John Sicuranza
Owner / Electrician

www.SicuranzaElectric.com
email: seco4343@aol.com

860-434-4343

Specializing in all Residential
& Commercial work

- | | |
|--|--|
| <input checked="" type="checkbox"/> Service Upgrades | <input checked="" type="checkbox"/> Troubleshooting |
| <input checked="" type="checkbox"/> Generators | <input checked="" type="checkbox"/> Network Cabling |
| <input checked="" type="checkbox"/> Surge Suppressors | <input checked="" type="checkbox"/> Landscape Lighting |
| <input checked="" type="checkbox"/> Smoke / CO Detectors | <input checked="" type="checkbox"/> Marine Wiring |

WHITE ELEPHANT SALE...continued from page 19

- Furniture, Indoor & Outdoor [call church]
- Gifts, Sundries, Knickknacks
- Jewelry: Costume & Fine
- Kitchen Items (Appliances, Dishes, Cookware)
- Lamps (Working)
- Luggage [soft side or Steamer trunks only]
- Musical Instruments
- Plants, Containers
- Shoes
- Skis – downhill must be “shape” style
- Sporting Goods [good condition]
- Tools (House & Garden)
- Toys, Stuffed Animals
- VHS, DVDs (Family Content)

Items that **WILL NOT** be accepted:

- Dirty or Broken Items or Junk
- Appliances (Large): Air Conditioners, Refrigerators & Stoves, Freezers, Washers & Dryers
- Bike helmets [used]
- Books: Technical or Textbooks, Encyclopedias
- Car Seats
- Chemicals
- Computer monitors [unless flat screen]
- Luggage [hard sided]
- Fuel cans with Gasoline or Kerosene
- Guns, Knives, Weapons
- Magazines, Newspapers
- Mattresses, and Box Springs
- Paint
- Particle board furniture
- Rugs
- Sewing Machines
- Skis – old style downhill
- Stuffed sofas / sofa beds
- Tires
- Treadmills [more than 5-years-old]
- TVs [unless flat screen]

Connecticut
Emissions
Program

IRVING



147 Boston Post Road
Old Lyme, CT 06371

M-F 7 am - 5 pm ~ Sat 7 am - 12 noon

860-434-2265

www.allproautomotive.com

Transfer Station/Landfill Hours

The Transfer Station is located on Four Mile River Road and is open Tuesday-Friday, 7:30 am-3:45 pm, Saturday, 8:30 am-4:00 pm. Closed Sunday and Monday. Tax payers vehicles should have a Transfer Station sticker affixed to the right-hand side of windshield. Stickers are available in the Selectman's office. Bring proof of property address (i.e., tax bill, mortgage statement or closing papers), along with registration.

The Old Lyme-Lyme Volunteer Connection

Summer is a great time to get involved with the community. The Old Lyme – Lyme Volunteer Connection (volunteer.truist.com/ollvolunteer) lists many of our local non-profit organizations that depend on volunteers to carry out the work that is so important to our community. There are opportunities to volunteer where you may show up when you are available, such as the soup kitchen garden, Common Good Gardens, or that require an ongoing commitment and some training, such as the Florence Griswold Museum and the Lyme Ambulance Association. Because we are a strong community with many

service and cultural organizations, there are many very interesting positions that suit a wide range of interests.

This summer Old Lyme – Lyme Volunteer Connection will be working to make this important resource as comprehensive as possible for organizations located in or providing services to the towns of Old Lyme and Lyme. The Volunteer Connection is a free online resource. If you are the leader of an organization that would like to participate, contact Sophie Christiano, the high school student who manages and administrates this website, at ollvolunteer@gmail.com. The following is the current list of our participating agencies:

Camp Claire, Inc.
 Caroline's Miracle Foundation
 Chamber of Commerce of Eastern CT
 Common Good Gardens
 Florence Griswold Museum
 Habitat for Humanity of Eastern CT
 High Hopes Therapeutic Riding
 Literacy Volunteers Valley Shore, CT
 Lyme Academy College of Fine Arts
 Lyme Ambulance Association
 Lyme Art Association

Old Lyme Land Trust
 Lyme Land Conservation Trust
 Lyme – Old Lyme Junior Women's Club
 Lyme Parks and Recreation
 Lyme Tree Woman's Exchange
 Lyme – Old Lyme Lions
 Lymes' Youth Service Bureau
 Mentoring Corps for Community Development
 Musical Masterworks
 MusicNow Foundation, Inc.

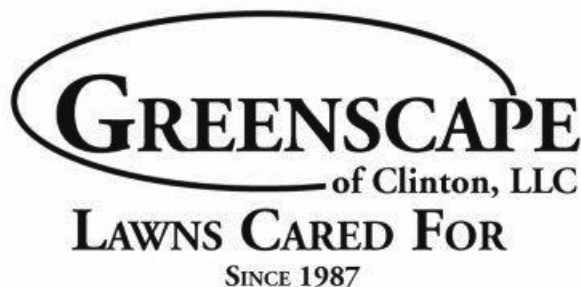
The Nearly New Shop
 Old Lyme – Lyme Volunteer Connection
 Old Lyme Children's Learning Center, Inc.
 Old Lyme Conservation Commission
 Old Lyme Education Foundation
 Old Lyme Historical Society
 Old Lyme Phoebe Griffin Noyes Library
 Old Lyme Visiting Nurse Association
 Saint Ann's Episcopal Church
 Shoreline Soup Kitchens and Pantries
 Town of Old Lyme

LAWN CARE SERVICES

FERTILIZING • CRAB GRASS CONTROL • WEED PREVENTION
 INSECT & GRUB TREATMENTS • LIMING & SOIL TESTING • AERATION

GREENSCAPE OF CLINTON LLC,

*offers a quality service tailored to meet your specific needs.
 We use environmentally responsible methods and products.*
 PROGRAMS AVAILABLE FOR ANY LAWN AND EVERY BUDGET.



(860)669-1880

For Your Free Estimate Call Frank Byrne

www.greenscapeofclinton.com



**We Care
 About Your Lawn.**

B# 1997 Commercial and Residential

Sound View Summer Concert Series

Sound View Summer Concert Series 2016 sponsored by the Sound View Commission.

The free outdoor concerts will be held at Sound View Beach, Old Lyme, Hartford Avenue, at the Flagpole 7:00 - 8:30 pm. Free parking in the Town Lot and on street. Bring your lawn chair and enjoy a great family evening of music.

June 30: Old Lyme Town Band. Since 1975, the band, whose members represent many area towns, has presented concerts from Guilford to Mystic and from Old Lyme to Middletown. Playing a little bit of everything from marches, movie-themed medleys, jazz, big band, pop, and classical. <http://oldlymetownband.blogspot.com/>

July 14:** **FEVER – Disco night.** A night of classic disco. Join us for your favorites including: Boogie Oogie - Taste Of Honey, Get Down Tonight - K.C. & The Sunshine Band, Stayin' Alive-Bee Gees, Celebration - Kool & The Gang, Bad Girls - Donna Summer, Let's Groove - EWF, and many more. This group of incredibly talented musicians have shared the stage with artists such as Aretha Franklin, The Four Tops, The Temptations, Charles Neville, Yusef Lateef, Johnny Mathis, and have played and recorded with countless other acts across the country.



July 28:** **102d Army Band Rock Ensemble.** The soldier/musicians of the 102d Army Band, Connecticut National Guard, are both trained warfighters and versatile professional musicians. While consistently meeting Army standards in physical fitness, rifle marksmanship and military discipline, these talented musicians perform a wide range of musical styles from the marches of John Philip Sousa to Bruno Mars "Uptown Funk." The 102d Army Band has several ensembles including Marching, Concert, Pop and Rock.

August 11 **: **Red Satin Band.** Swing, Jazz, Big Band along with some R&B, Classic Rock, and Funk. The best of seven decades of

Continued on page 23



Caliber Computing

Charles E. Delinks, Jr.
www.calibercomputing.com

Since 1993

Computer Systems & Networks

- Virus & Spyware Removal
- DSL & Cable Broadband
 - Network & Email Configuration
- Sales, Installations & Upgrades

**20 Homestead Circle
Old Lyme, CT 06371**

(860) 434-1926 phone
(860) 823-9250 cell
ced@calibercomputing.com

Exencial[™] Wealth Advisors

Explore. Execute. Excel.



**Providing Planning,
Leadership
&
Investment Management**

Thomas P. McGuigan, CFP®
tmcguigan@ExencialWealth.com

Jean A. Wilczynski
jwilczynski@ExencialWealth.com

www.ExencialWealth.com

187-B Boston Post Road, P.O. Box 623
Old Lyme, CT 06371
(860) 434-5999 · (888) 434-5999

Investment Advisory Services offered through Exencial Wealth Advisors, a SEC-Registered Investment Advisor.

LEW THE PLUMBER

ARTHUR LEWIS
Owner

44 Center Beach Avenue
Old Lyme, CT
06371

**860
434-5862**

SOUND VIEW SUMMER CONCERTS...continued from page 22

great music. Featuring vocalist Valerie Rogers. The 12 piece Red Satin band has played to rave reviews throughout the northeast; "Amazing performance...Great Show...Stunning Vocals" The unique blend of personality and great music is delight for audiences of all ages, Red Satin will get you dancing or just sit back and enjoy. www.redsatinband.com

August 25:** **Four Barrel Billy.** Your favorite songs from the 50s, 60s & more. Doo-wop, Rock-a-billy, surf, blues and good old rock & roll. These guys look like greasers, but sing like angels. One of the top acts on the Connecticut shoreline for dancing and good times. FourBarrelBilly.com.

** = **Rain location:** Shoreline Community Center, 39 Hartford Avenue.

For more information contact the Sound View Commission - www.oldlyme-ct.gov.

Dates and entertainers may be subject to change.

Tax Collector's Notice

Notice is hereby given to the Taxpayers of the Town of Old Lyme that I have a warrant to collect the taxes on the Grand List of October 1, 2015. Motor Vehicle taxes are due in full July 1, 2016. Real Estate and Personal Property bills may be paid in full on that date, however, Real Estate and Personal Property bills over \$100 are paid in two installments: July 1, 2016 and January 1, 2017. Partial payments are always accepted.

If the tax due, or installment due, is not paid within one month of the due date, the tax becomes delinquent and subject to interest at the rate of one and one half percent (1½%): 18% per year. The minimum interest charge is \$2. August interest is 3%.

Questions pertaining to the assessments and exemptions should be directed to the Assessor's office at (860) 434-1605 ext 218 or 219. Tax questions at (860) 434-1605 ext 216.

Payments may be made at the Tax Office, Old Lyme Memorial Town Hall, 52 Lyme St., weekdays from 9:00 am to 12:00 pm and 1:00 pm to 4:00 pm, by mail: Old Lyme Tax Collector's Office, PO Box 482, Old Lyme, CT 06371.

Judith A Tooker, Tax Collector

To download previous issues of *Old Lyme Events* visit www.eventsmagazines.com and download the issue you desire!



Open for the Season May 27th

- Melt in your mouth **Beef Brisket!**
- Tear off the bone **Pork Ribs!**
- Out of this world **BBQ Chicken!**
- Thickly Shredded **Pulled Pork!**
- Unbelievably tender **Beef Short Ribs!**

This is Old Fashion Smoked Barbeque
The Real Thing!

Located Seaside Avenue Town Beach
Westbrook



FREE WORKOUT

SATURDAYS™

Everyone Welcome • Weekends in May

BRIDEBROOK PARK, NIANTIC • 10:30 AM

Learn more at anytimefitness.com

SOURCE CODE: MAY16RIBT



Always open



Friendly support



Group classes

17 Liberty Way, Niantic, CT 06357
860-691-1611
anytimefitness.com



All participating locations. Contact your local Anytime Fitness® for details. Terms and conditions may apply. Each location is independently owned and operated. ©2016 Anytime Fitness, LLC.

Sound View Improvements Project Public Informational Update

Studies have pointed out the potential economic benefits and enhanced quality of life reasons to make improvements in the Sound View area of Old Lyme. Thanks to the efforts of many, the Town supported the development of a conceptual design for improvements on Hartford Avenue. With the unanimous support of our Regional Planning Agency and member towns, the town applied for and was awarded a competitive Federal Transportation Alternative funding opportunity in 2013. The funding covers 80% reimbursement for eligible project expenses.

Through the required DOT development process, the project committee and selected design firm developed an opinion of probable cost of construction. The estimated cost of the conceptual improvements exceeded the funding reimbursement allowance and the planned restrooms required a sanitary sewer line. Additional funding and the anticipated sanitary sewer line will be needed to advance the next phase of improvements which include restrooms, a green space and a new parking lot. ConnDot may consider the project plans for the on-road bike route and signage from Hartford Ave. to the

Baldwin Bridge bike path when they plan improvements for Route 156.

The committee, in agreement with the DOT, opted to focus initially on designing the Hartford Avenue streetscape to take full advantage of the transportation reimbursement funding. The improvements include an on-road bike route, reconfigured parking, new curbing, handsome bump-outs and “pocket parks,” with decorative benches, trees, bike racks and banner poles, and ADA compliant wider sidewalks. The entire cost of construction must be approved at Town Meeting. Additionally, the project committee is pursuing historical looking street lighting which, although not funded by the grant, is considered a necessary streetscape enhancement.

The streetscape improvements are designed to support safety and tourism while encouraging alternative means of transportation to our beautiful beach. The efforts have already had a positive impact. The Estuary Transit Bus will service the area with buses equipped with bike racks; entrepreneurs have purchased some dilapidated buildings and beautified an empty lot on Hartford Ave. Also,

Continued on page 25



Learn to Sail

Junior Sailing Summer Programs
2-week Day-Sessions

Session 1 • June 27-July 8
Session 2 • July 11-July 22
Session 3 • July 25-August 5

Weekdays 9-3pm | Youth ages 9-16 | Certified Instructors



North Cove
Yacht Club

for more info:
www.northcoveyc.com
Old Saybrook, CT



Maus
& SON, INC.

Serving the CT River Valley Since 1924

Heating Oil Dealer #252
P-203832 / S-303213

Your Source for BioHeat®
the “natural heating oil”

- **WATER SYSTEMS**
Pumps, Tanks, Heaters, Filters
- **FUEL OILS, PLUMBING AND HEATING**
High Efficiency Boilers, Solar Hot Water Service and Repairs, Remodeling, Renovations

860-873-8454
www.mausandson.com

SOUND VIEW IMPROVEMENTS...continued from page 24

Sound View Beach is being considered for nomination to the National Register of historic places as an historic district.

The Sound View Improvements Committee wishes to acknowledge the efforts of our ConnDot liaison, VHB Engineering, our design engineering firm, BSC Group, and Nina Peck Architecture of Old Lyme. The committee is grateful for the input and support of the community and town officials. Thank you for attending and see you at Sound View!

The Sound View Improvements Committee

Angelo Faenza, Jim Lampos, John MacDonald, Frank Pappalardo-Chairman of the Sound View Commission; First Selectwoman Bonnie Reemsnyder, Selectman Arthur "Skip" Sibley and Selectwoman Mary Jo Nosal.

Estuary Council Regional Senior Center

220 Main Street, Old Saybrook, (860) 388-1611

The Estuary Council of Seniors, Inc. (ECSI) is a community center for the Estuary region's residents over 50 years old providing nutrition, transportation, health support services, education opportunities and socialization. We have been promoting healthy and active lifestyles for adults 50 and better through quality programs and services in the nine-town Estuary region for over 40 years. Please visit us at www.ecsenior.org for additional information or call us at (860) 388-1611.

BINGO is Back! Every Thursday evening at the Estuary. Games begin at 6:30 pm. Doors open at 5:30 pm. Admission, including game package, is \$12 per player. Cash prizes with the progressive jackpot maximum payout of \$1,000 (increases \$100 each week). **Open to all ages.**

The Estuary Council offers social & educational programs, health screenings, exercise classes for many levels, a variety of trips, and much more! We also have a gym with evening hours and affordable rates! View our newsletter on our website or sign up to receive it monthly.

Newly retired or looking to help your community? We have volunteer opportunities to fit your busy schedule. The time and talents of our many volunteers are an integral part of our organization. Find out how you can make a difference.

Our Thrift Shop offers the best bargains on the shoreline. Clothing, furniture housewares, decorations, and jewelry are just a few of the things you will find. Every day is different. All ages are welcome to come in and shop.


Queensway Farm LLC.

Established 2000

Our trainer, a successful event rider, trained and rode in Europe. Lessons combine necessary disciplines for a well rounded relationship with your horse.

Jumpers to GP, Dressage to P St.G., eventing, Eq and hunters.

Lessons all levels. Ship ins welcome. Boarding, leases, sales, showing. Large Indoor and outdoor arenas.

Alicia Gear, Owner
Cell 860-861-0316

Queensway Farm LLC
88 Grassy Hill Road, East Lyme, CT 06333

Good hearing is
PRICELESS




Is it time to get your hearing checked?

 **County Hearing and Balance**

OLD SAYBROOK
900 Boston Post Road
860-388-0022

WATERFORD
Lowe's Plaza
167 Parkway North
860-443-6944

Call us for a Free Initial Consultation
All services by Doctors of Audiology
www.countyhearingandbalance.com



**Let Nature's Farmacy
Be Your Prescription
For Vibrant Health!**

Featuring all organically sourced local farm to table food, ice cream, vintage sodas, coffee, tea, nutrient dense juices and smoothies, all with super healing foods and herbs from nature's own pharmacy!

All served up from the vintage c.1896 historic James Soda Fountain!
Open everyday 7 am till 10 pm.

**James Farmacy Organic Cafe
& Juice Bar**
2 Pennywise Lane, Old Saybrook, CT
860-395-1781, jamesorganiccafe.com
Info@jamesorganiccafe.com
FB: jamesorganiccafe



**Old Lyme
Visiting Nurse
Association, Inc.**

*At time of hospital discharge or
whenever in need of homecare
services, please call*
860-434-7808
or
860-434-9003
*Homecare license via Interim
Health Care of Eastern Connecticut*

Lyme's Senior Center

Check out our "new" Southeastern Connecticut Senior Center Website for upcoming events at <http://seniorcenterct.org/>.

The Humble Bees: This five-man group from central Connecticut, will perform in their unique musical style on May 31st at 1:00 pm. (Note: A rousing performance of "Danny Boy" is often played on a 100-year-old saw!) There will also be familiar songs in a sing-a-long format, and humorous songs performed by the Humble Bees. So make sure to mark your calendar for this free and engaging performance.

Pizza Day: On June 3rd our kitchen will be closed for congregate lunch, but pizza will be served in the craft room at 12:00 pm for all those that are interested. It will be \$3 for pizza and beverage. After lunch we will show a movie TBA in the front room. Sign up and payment due by June 2nd.

Bitesize Learning: Liberty Mutual Insurance will be conducting a Breakfast and Learn session on June 17th at 9:15 am regarding understanding Auto Insurance 101 and tips to get the biggest bang for your buck. Please sign up by calling (860) 434-1605 ext. 240 to attend. Limited Space Available. A breakfast from Panera Bread will be provided.

Movie: *The Proposal* On June 17th at 12:45 pm we will be showing the movie, *The Proposal*. Faced with deportation to her native Canada, high-powered book editor Margaret Tate (Sandra Bullock) says she's engaged to marry Andrew Paxton (Ryan Reynolds), her hapless assistant. Andrew agrees to the charade, but imposes a few conditions of his own, including flying to Alaska to meet his eccentric family. With a suspicious immigration official always lurking nearby, Margaret and Andrew must stick to their wedding plan despite numerous mishaps. This hilarious movie will be shown in closed caption.

Outsmart the Scammers: Incidents of fraud are on the rise and scammers' tactics are becoming more complex. That's why it's important to educate yourself about

fraud. And while no one is immune, there are steps you can take to outsmart the Scammers. Join us on June 21st at 1:00 pm for this presentation and learn important strategies to help protect you and the ones you love. We'll share: how to spot certain red flags that may indicate a fraudulent encounter, resources you can turn to in the event you or a loved one are targeted and steps you can take now to help protect yourself and your loved ones. To register for this free program please call (860) 434-1605 ext. 240.

Mr. Magic: Rich Rothstein, aka Mr. Magic is a Norwich attorney by day, master of illusions by night. He will be making a special day time appearance on June 22nd at 1:00 pm & he will reveal magic ranging from the ancient to today's more recent illusions. You'll be amazed. To register for this free program please call (860) 434-1605 ext 240.

FYI: The Lymes' Senior Center will be closing at 1:00 pm on June 10th. In addition, the center will be closed on Friday June 24th and 27th for carpet replacement.

Bicycling across the USA on the Transamerica: Richard Humphreville will be presenting a slide show presentation on his real life experience on June 29th at 1:00 pm. To register for this free program please call (860) 434-1605 ext 240.

AARP Drive Safety Class will be held on Friday, July 1st from 1:00 pm- 5:00 pm. Call (860) 434-1605 ext. 240 to sign up. Cost is \$15 for members/\$20 for non-members.

Sing a Long: Come join us for a Sing a Long with Songbird Judy Hall on July 6th at 1:00 pm.

History of the Groton/New London Submarine Base: Please join us on July 12th at 1:00 pm as we celebrate Connecticut's Submarine Century with a

Continued on page 27



look back at the history of the submarine base. Eury Cantillo, Director of Education at the Submarine Force Museum, has combed the Museum's collection to create a photographic journey through history. The tour will include aerial photos through the decades, pictures of President Franklin Roosevelt's visit in 1940, early historic views of the base including the evolution of the waterfront and memories from each era from 19th century through the Cold War. Learn why Groton was chosen to be the site of the country's first submarine base and why Groton is the "Submarine Capital of the World." To register for this free program please call (860) 434-1605 ext. 240.

Katharine Hepburn: From Hartford to Hollywood. With a stage and film career that spanned six decades, Katharine Hepburn is an American icon. Born and raised in Connecticut, Hepburn had a career in stage, film and television that reflected the changing role of women in

broader society. Challenging the norms of the day, she took control of her image and identity by establishing a unique sense of style which influenced countless women, fashion designers, and the informal, elegant approach to American style that continues to resonate today. The story of her life-long ties to Connecticut offers a complete picture of how Hepburn became the woman and the star she was. This presentation will link her career and legacy to her roots in Connecticut to ask how she achieved her truly extraordinary legacy. Join us for this free slide show & presentation by the Connecticut Historical Society on July 13th at 1:00 pm. Call (860) 434-1605 ext. 240 to register.

Bingo will be held on July 20th at 1:00 pm. Admission is \$1 at the door. Call (860) 434-1605 ext. 240 to sign up.

Managing Osteoporosis: Mary Jane Fegan, DPT from Rehab Concepts Physical Therapy will be here on Tuesday, July 26th

at 1:00 pm for a presentation on Managing Osteoporosis. Learn about risk factors and practical advice on ways to alleviate the symptoms of Osteoporosis.

A Trip Down Memory Lane: The Post Road in the 50's and how it got that way: Mark Lander, Co-President of the Old Lyme Historical Society will be presenting this reminiscent lecture on July 27th at 1:00 pm. To register, please call (860) 434-1605 ext. 240.

What is 2-1-1? It is

Connecticut's free information and referral service. By dialing 2-1-1, a toll-free number throughout CT, callers can reach knowledgeable, multilingual staff and get information, referrals or seek help in a crisis. 2-1-1 operates 24 hours a day, every day of the year. TDD access is available.



SULLIVAN
LAWN SERVICES



LANDSCAPE DESIGN & BUILD
HAND DRAWN RENDERINGS
FULL ESTATE PLANS
RESIDENTIAL • COMMERCIAL • CONDO

- + IRRIGATION SYSTEMS
INSTALLS/MAINTENANCE
- + LAWN & LANDSCAPE MAINTENANCE
- + FERTILIZING & TICK CONTROL
- + RETAINING WALLS
- + ARCHITECTURAL PAVERS:
POOLSIDE & PATIOS
- + NEW LAWN INSTALLATIONS:
SOD INSTALLS/HYDROSEED
- + EXCAVATIONS & DRAINAGE
- + LANDCLEARING/FOUNDATION:
DOZER SITE WORK
- + DUMPSTER SERVICES

SERVING THE SHORELINE AREA *Since 1996*

Call today for consultation 860-767-2811
www.sullivanlawnservices.com



LIKE US



FERT #B2547

CT HIC#06060162

The Sound View Beach Association

Memorial Day weekend to Labor Day - Weekends and Holidays. **Sound View Beach Donuts sales:** The Original Sound View beach Donuts. The original, freshly made, "Beach Donuts" on sale at the Shoreline Community Center, 39 Hartford Avenue, Old Lyme, 7:00 am to 10:00 am or until sold out. All sale profits go to support the Shoreline Community Center and the staff are all volunteers.

June 18. Pancake Breakfast: Shoreline Community Center, 39 Hartford Avenue, Old Lyme, 7:00 am to 10:00 am. All sale profits go to support the Shoreline Community Center and the staff are all volunteers.

June 29 to September 7 - Every Wednesday evening. BINGO: Adults and children accompanied by adult are all welcome to join in the fun. Doors open 6:00 pm - Games begin at 7:00 pm. Win CASH prizes. Shoreline Community Center, 39 Hartford Avenue. All profits support the Shoreline Community Center.

July 2. Independence Day Parade. Everyone is invited to join in the parade; kid, adults, pets! Wear your favorite patriotic costume, decorate your bicycle, build a float. Featuring the Silver Cornet Marching Band, Kids Prizes & Flags. Assembly at

9:45 am, Shoreline Community Center 39 Hartford Avenue, Old Lyme, Parade starts at 10:00 am.

June 9, 23, - July 7, 21, - August 4, 8 - September 1. Jazz@TheVue: 7:00 pm. Jazz is alive and well at Sound View and you are most welcome to come and be a part of it. Join us for "open mic" night for jazz musicians at the Shoreline Community Center, 39 Hartford Avenue, Old Lyme. You will hear spontaneous, creative improvised jazz, and it will definitely be worth the suggested \$5 donation to the Shoreline Community Center Building Fund.

July 16. Movies Under the Stars, 8:30 pm, family night (FREE). Across the street from the Shoreline Community Center, 39 Hartford Avenue. Rain location: Shoreline Community Center.

August 6 from 3 to 7 pm: Bouncing Castle Kids day. Across the street from the Shoreline Community Center, 39 Hartford Avenue.

August 13: Pasta Dinner, 5:30-8 pm. Great food – Great company. Reservations encouraged, walk-ins welcome. Shoreline Community 39 Hartford Avenue, Old Lyme. All sale profits go to support the Shoreline Community Center and the staff are all volunteers. <http://www.soundviewbeach.com>.

Continued on page 29

PilatesforLife

The Tradition and Method of Joseph Pilates

Joseph H. Pilates, originator of **Pilates Method**... trained **Romana Kryzanowska**, Master Teacher NYC... Romana trained **Marlene Powers**, let Marlene train you in the true tradition...

Fitness and Flexibility
Alignment and Posture
Deep Core Strengthening
Physical Therapy Compliment

Certified Instructor
Over 900 Training Hours

Mat Classes
Private Equipment Instruction
Beginner to Advanced



2010, 2013 & 2015
Readers Choice
Best Pilates Studio
26A Saybrook Road
Essex, Connecticut
860-227.5790

Celebrating 10 Years!

Marlene Powers

www.inspiredbypilates.com

email: info@inspiredbypilates.com

COMPUTER PROBLEMS DRIVING YOU NUTS?



- Unlimited Support – One Low Price
- Server, Network & Workstation Maintenance
- Network Security & Proactive System Monitoring
- Local and Online Backup and Recovery
- 2 Free Hours or Free System Analysis - Just to Give Us A Try (Offer for 4 or More Computers)

Now Celebrating 10 Years of Helping Business' Increase Productivity and Profits!

TechNet
computing

rob@technetcomputing.com
www.technetcomputing.com

860.740.0328

SOUND VIEW BEACH ASSOCIATION...continued from page 28

Dates and events may be subject to change.

The Sound View Beach Association is an all-volunteer, non-profit, civic organization. The SVBA owns and manages the Shoreline Community Center and also provides the flags in the Sound View area. Everyone is invited to join or help. All donations are tax deductible and we are registered for "matching gift" grants with many companies. For more information contact: info@soundviewbeach.com or visit www.soundviewbeach.com.

Town Clerk's Office

Eileen K. Coffee, Town Clerk

Vicki Urbowicz, Assistant Town Clerk

Congratulations

We congratulate the following on their recent marriages:

January

Gerald Arthur Curtis, Jr. & Keri Ann McGeary

Kenneth Frederick Fearnley & Rachel Jenna Edwards

Lee Joseph Shay & Meredith Loveny Ritz

Mark W. Rohlfs & Julie Anne Wessinger

February

Ilyas Kucukbutros & Selena Uyar

Cory Francis Brassard & Elizabeth Wladimroff

Hoscar Hernan Lopez-Gutierrez & Silvia Rocio Bravo-Bernal

James Bernard Coward, Jr. & Linda Louise Page

Thomas Moriarty & Carol L. O'Day

March

Keith Allen Sikora & Caitlyn Marie Byington

Charles Francis Martin & Sommer Dawn Brooks

David Joseph Vitali & Ellen Kristine Pishvanov

Mark David Johansen & Haley Denise Busch

Paul George Kilbride & Jean Evelyn Dailey

With Sympathy

We would like to express our condolences to the families of recently deceased Old Lyme residents:

January

Justin Donald Longo

Ann Joan Vidou

Jean Ann Kearns Puddington

Jean E. Sisk

February

Charles Carr

Barbara Carlson Perkins

James McHugh III

Paul James Peters, Sr.

Richard Hopkins Miller

Gertrude Kwasniewski

Caroline Evelyn Dean

March

Gay Bennett Reichart

Chester W. Hale, III

Janice Brentlinger

Norman Emerson

Albert J. Swanson

Gertrude M. Gaudio

Renee Thebaud Wilson



BALLEK'S GARDEN CENTER



**Call Now to Plan the
Landscaping of your Dreams!**

FULL SERVICE GARDEN CENTER
Great Selection of Annuals, Perennials, Trees & Shrubs

FULL SERVICE FLORIST
Gardening Gifts & Fresh Cut Flowers

LANDSCAPING
Walls, Walks, Patios, Tree and Garden Installation

***Ballek's ~ For All Your Landscaping
and Garden Needs***

860-873-8878

90 Maple Avenue, East Haddam, CT
www.BalleksGardenCenter.com



ZELEK ELECTRIC CO.



- BUCKET TRUCK SERVICE
- MOTOR CONTROLS
- LANDSCAPE LIGHTING
- TELEPHONE WIRING
- GENERATOR INSTALLATIONS
- SALES & SERVICE
- UNDERGROUND WIRING
- FIRE ALARM SYSTEMS
- LIGHTING CONSULTANT
- TROUBLE SHOOTING
- SOLAR ELECTRIC SYSTEMS



CT LICENSE #103314

**RESIDENTIAL • COMMERCIAL
MARINE • INDUSTRIAL**

***"BIG ENOUGH TO DO THE JOB,
SMALL ENOUGH TO CARE"***

860-434-9726

OLD LYME, CT www.zelekelectric.com

Old Lyme Historical Society



On April 6, the Historical Society's **Tuesday Morning Work Crew** was honored at the annual meeting of the Connecticut Trust for Historic Preservation. Ellis Jewett, Chairman, Skip Beebe, Kevin Cole, Ted Freeman, and Stephen Joncus, our pro bono architect, all received Awards of Merit. In making the citation, Christopher Wigren, Deputy Director, stated that the crew "volunteered their time, energy and labor to renovate the Old Lyme Grange for the historical society, creating a

historic setting for exhibits and events plus a storage facility for the society's collections. This do-it-yourself spirit is not dead, and still has much to contribute to the ongoing life of Connecticut's historic places." Other recipients included the Wadsworth Athenaeum, the Roosevelt Mill for conversion to Loom City Lofts, and the Merritt Parkway Service Areas. A distinguished group of seven recipients were recognized. Historical Society friends and family applauded them all, but gave our team an extra round of applause. It was a splendid occasion.

A reception was held on May 28th to honor the work of Platt Hubbard (1889-1946). Hubbard was a noted etcher, landscape artist, and printmaker. He moved to Old Lyme around the time of World War I, and it became his primary residence. The Society was recently given a unique steel engraving by the family of the late Cynthia Twining. The engraving depicts a whimsical view of the town as imagined by Hubbard, circa 1945. A small exhibit of his prints was on view. The Society will also officially launch a line of products using his image of Old Lyme.

The Historical Society is an enthusiastic partner for the 30th anniversary of the Midsummer Festival, Saturday July 30th. We are proud to be hosting Area 4 of the Handweavers Guild of

Continued on page 31

Old Lyme Town Hall • 860-434-1605
www.oldlyme-ct.gov

Old Lyme Municipal Departments

<u>Department</u>	<u>Contact</u>	<u>Phone</u>
Animal Control	Lynn Philomen	434-1605 x244
Assessor	Walter Kent	434-1605 x218
First Selectwoman	Bonnie A. Reemsnyder	434-1605 x211
Board of Selectmen	Mary Jo Nosal	434-1605 x212
Board of Selectmen	Skip Sibley	434-1605 x212
Building	John Flower	434-1605 x230
Emergency Management & Fire Marshal	David Roberge	434-1605 x231
Finance Director	Nicole Stajduhar	434-1605 x232
Harbormaster	Harry Plaut	434-1605 x212
Information Technology	Ruth Roach	434-1605 x237
Parks and Recreation	Don Bugbee	434-1605 x235
Police	TFC Gary Inglis	434-7080
Probate Court	Hon. Jeffrey McNamara	739-6052
Public Works	Ed Adanti	434-1605 x243
Registrar of Voters	Sylvia Peterson & Don Tapper	434-1605 x226
Sanitarian	John Sievec	434-1605 x229
Senior Center	Stephanie Lyon	434-1605 x240
Social Services	Valerie Goncalves	434-1605 x228
Tax Collection	Judith Tooker	434-1605 x216
Town Clerk	Eileen Coffee	434-1605 x221
Treasurer	Tim Griswold	434-1605 x232
Zoning Enforcement	Keith Rosenfeld	434-1605 x225

OTHER AGENCIES

Library/Passports	Mary Fiorelli, Director	434-1684
School District #18	Superintendent of Schools	434-7238
Youth Services Bureau	Mary Seidner, Director	434-7208

Old Lyme - Community Listings

USEFUL NUMBERS

CAMP CLAIRE	(860) 434-0368
CONSUMER PROTECTION	(860) 566-2294
LYMES' YOUTH SERVICE BUREAU	(860) 434-7208
SENIOR CENTER	(860) 434-4127
OLD LYME VISITING NURSE	(860) 434-7808
OLD LYME HISTORICAL SOCIETY	(860) 434-0684
9 TOWN TRANSIT	(860) 510-0429
LYME/OLD LYME JR WOMEN'S CLUB	(860) 501-9773
DEMOCRATIC TOWN COMMITTEE	(860) 434-2271
REPUBLICAN TOWN COMMITTEE	(860) 434-0740
LYME ART ASSOCIATION	(860) 434-7802
VETERANS OF FOREIGN WARS -	
LYMES' POST 1467	(860) 434-4207
AMERICAN LEGION - POST 41	(860) 664-0047

SCHOOLS

SUPERINTENDENT'S OFFICE DISTRICT 18	(860) 434-7238
MILE CREEK SCHOOL	(860) 434-2209
CENTER SCHOOL	(860) 434-7838
MIDDLE SCHOOL	(860) 434-2568
LYME/OLD LYME HIGH SCHOOL	(860) 434-1651
MULTICULTURAL MAGNET (NEW LONDON)	(860) 437-7775

COLLEGES

LYME ACADEMY COLLEGE OF FINE ARTS	(860) 434-5232
-----------------------------------	----------------

HISTORICAL SOCIETY...continued from page 30

Connecticut. There will be an exhibit of shawls, rugs and other examples of handweaving. Visitors will see four different kinds of looms in action, and will be able to try their hand on a special community loom. The Society will also have our new Hubbard product line as well as other publications for sale. Tours of the completed state-of-the-art archives room in the lower level of the building will be conducted. An extra added attraction will be Jim Lampos, who will be a strolling troubadour during the day.

The Historical Society Annual Antique Appraisal event is scheduled for Saturday, September 17, 1-4 pm in the Community Room of Town Hall. For a small fee, you may have a beloved household treasure appraised by qualified experts and learn whether it should be insured or retired to the basement. The old adage applies "One man's trash is another man's treasure."

Rosé

There is nothing quite as refreshing as a nice summer rosé. Rosés are wines that are basically "pink" in color, which is attributed to the grape varieties used, and how long the skins stay in contact during the wine making process. The biggest misconception about rosé is that they are sweet, due to the previous popularity of White Zinfandel, which is made sweet by cutting the fermentation process early. This results in higher residual sugar and lower alcohol.

Rosés are typically a blend of more than one red varietal, and occasionally a few white varietals. The flavor is very pleasant and refreshing, with accents of fresh berries such as strawberry, raspberry and cassia. Rosés are a delicious alternative to white or red wine for summer. They are great for picnics and barbecues which normally provide a vast selection of foods including chicken, beef and seafood.

Rosés are produced all over the world, so each country's unique blend of grapes varies. France is the most popular country for rosé production, with Provence being the dominant region. Provence produces very light and refreshing rosé that can be drunk on their own or paired perfectly with seafood. Côtes du Rhône also produces a bit fruitier, full-bodied wine, which consists of the classic Rhône varieties; Grenache, Syrah and Cinsault. Spain also produces fantastic rosés that are on the heavier side consisting of Tempranillo, these are referred to as Rosado. California also does a beautiful job producing Pinot Noir rosé, which are soft yet very flavorful and refreshing. In South Africa it is typical to blend a bit of Viognier into the rosé, giving a pleasant floral quality to the wine.

Whether you typically drink white or red wine, you cannot go wrong with a rosé. During the hot summer months when all you want to do is cool down, try a great bottle of rosé. They are guaranteed to please the palate as well as any guest you may have. Enjoy your spring and these mouth-watering wines!

Art LiPuma, General Manager, SeaSide Wine & Spirits



- Dark Pine Mulch
- Hemlock Bark Mulch
- Spruce/Fir Bark Mulch
- Midnight Black Mulch
- Natural Cedar Mulch
- Organic Hardwood Mulch
- Screened Top Soil
- Screened Organic Compost
- Firewood

All Mulches available in Bag or Bulk



Please check our website for more information
www.bombacimulch.com

860-767-8501
45 Plains Road
Essex, CT

\$1 Off per yd.
On All Mulches
with this ad



CONNECTING YOUR CONNECTICUT!

Public Transportation for all ages serving
Chester, Clinton, Deep River, East Haddam,
Durham, Essex, Haddam, Killingworth, Lyme,
Old Lyme, Old Saybrook & Westbrook

Medical Transportation to Middletown

Connections to Southeast Area Transit buses in New London,
CT Transit New Haven in Madison, Middletown Transit
and CT Transit Hartford in Middletown

Call 860.510.0429
www.9towntransit.com



9 Town Transit is Operated by the
Estuary Transit District



Celebrating 47 Years
at the same phone number

860-669-6919

**NEW INGROUND POOLS
REPLACEMENT LINERS
RENOVATIONS
CHEMICALS & SUPPLIES
COMPLETE REPAIR SERVICE
FREE WATER TESTING**

9 North High Street
Clinton, CT 06413

B&B

PEST CONTROL
LLC
860-510-9159

- **General Pests**
 - **Termites**
 - **Rodents**
- **Inspections**
- **Free Estimates**



Bob Ventres
Owner/Operator
East Haddam, CT

Licensed &
Insured
CT Lic #B-2878

Leukemia Cup Regatta

North Cove Yacht Club in Old Saybrook is honored to be the sponsor of record for this year's Leukemia Cup Regatta in partnership with Duck Island Yacht Club, Essex Corinthian Yacht Club and Pilots Point in Westbrook. Skippers' meeting and auction will be held at North Cove Yacht Club on Friday, August 26. Post-race party will be held at Duck Island Yacht Club in Westbrook on Saturday, August 27.

The Leukemia & Lymphoma Society's Leukemia Cup RegattaSM is a thrilling series of sailing events that combines the joy of boating with the important task of raising money to cure cancer. Since its inception, the Leukemia Cup Regatta has raised millions of dollars for lifesaving research and patient services, bringing help and hope to patients and their families.

Nearly 1,012,533 Americans currently battle blood cancers. Every three minutes, someone is diagnosed. They are men, women, children, of every race and every

age. Every ten minutes, someone dies from these cancers. Participation in the Leukemia Cup Regatta helps save lives!

Funds raised through the Leukemia Cup Regatta advance LLS's mission: cure leukemia, Hodgkin and non-Hodgkin lymphoma and myeloma and improve the quality of life of patients and their families. LLS carries out its mission by funding leading-edge cancer research; providing information and support services for patients, and education for health care professionals; and advocating for patients at national and state levels.

At events held at yacht clubs across North America, skippers register their boats and recruit friends and colleagues to help crew and to raise funds. Crew members seek donations from friends, family, co-workers and employers to sponsor their boat. National and local event sponsors also support the Leukemia Cup Regatta.

For registration and event information, go to: LeukemiaCup.org or NorthCoveYC.com.

SmartER Appointments Now Available at Shoreline Medical Center

Why spend your time in the ER waiting room when you could be waiting in the comfort of your own home instead?

The new, innovative SmartER appointment system provides easier access to the Shoreline Medical Center Emergency Department – letting you schedule your ER visit for non-life threatening emergencies up to eight hours in advance.

According to Michael Saxe, M.D., Chair of the Department of Emergency Medicine at Middlesex Hospital, "With people's often hectic schedules, making an appointment on the SmartER website can improve convenience, help reduce waiting time in the Emergency Department, and

allow patients quicker access to medical care for non-emergency injuries or illnesses, once they arrive."

Some examples of non-life threatening emergencies include sore throat, earaches, minor cuts, minor strains or sprains, mild diarrhea, or sports injuries. For any medical problem that is life threatening, dial 911 immediately.

To schedule a SmartER appointment, go to www.middlesexhospital.org/smartER. The Middlesex Hospital Shoreline Medical Center Emergency Department is located at 250 Flat Rock Place in Westbrook and provides care 24 hours a day, seven days a week.

Renters Rebate Program for Seniors and Totally Disabled Renters in Old Lyme

Connecticut State law provides a reimbursement program for Connecticut renters who are seniors or totally disabled, and whose incomes do not exceed certain limits. Persons renting an apartment or room, or living in cooperative housing or a mobile home may be eligible for this program. Renters' rebates can be up to \$900 for married couples and \$700 for single persons. The renters' rebate amount is based on a graduated income scale and the amount of rent and utility payments (excluding telephone) made in the calendar year 2015.

Applications taken between April 1 and October 1. To qualify renters must be over the age of 65 or legally disabled and receiving social security. Income limits for the program are as follows;

- **Married Couples income must be under \$42,900**
- **Single must be under \$35,200**

NOTE: To apply please contact Valerie Rienks, Social Service Coordinator for an appointment at 860-434-1605 Ext 228 or by email at vrienks@oldlyme-ct.gov.

The following information is necessary for application:

- Copy of 2015 Income Tax Return, if filed
- Proof of Social Security Income for 2015 (form 1099)

If no income tax filed, please bring:

- Total income from 2015 (all sources) taxable and non taxable
- Proof of Social Security Income for 2015 (copy of form 1099)
- Railroad Retirement etc. / Proof of Pension Benefits for 2015/ Proof of Interest, dividends from stocks and bonds for 2015
- Proof of 100 % disability from Social Security (form TPQY Stating Disability & form 1099)
- Rent receipts for the entire calendar year 2015 and
- Printout from Electric, Gas and Oil Companies of payments made in 2015

COMPANIONS & HOMEMAKERS INC.
CAREGIVERS WANTED THROUGHOUT CT

We are looking for mature, responsible individuals.

- **Choose your own hours**
- **FT/PT Positions available**
 - **Summer positions available**
- **Live-in positions available**
 - **80% medical/401K**

Apply Online Today at
www.caregiverjobsct.com
or call **888-844-4442**
DCP HCA 0000101

BOMBACI



PROPERTY SERVICES LLC

CT LICENSED ARBORIST
#: S-4718

Complete Tree & Shrub Care Including:

- ♦ Pruning ♦ Cabling
- ♦ Gypsy Moth Control
- ♦ Spraying ♦ Fertilizing
 - ♦ Tick Control
 - ♦ Mosquito Control
 - ♦ Deer Repellent
- ♦ Arborist Consulting Services

NOT Affiliated with Bartlett Tree Experts!

(860) 434-7948
Mark Bombaci (owner)
www.bombaciservices.com
Bus. Reg.#: B-2330 - Insured

WENNERBERG PAINTING

Interior & Exterior Painting

Powerwashing

860-434-5553

Old Lyme, CT

Lymes' Youth Service Bureau

LYSB Summer Programs for Children, Teens & Families

Beach Dances. Every Tuesday 7-9 pm. June 28th-August 16th at White Sands Beach for middle schoolers in Lyme and Old Lyme. \$5/admission – music, food, fun, friends. Check our website or facebook page each week for possible weather related cancellations.

Beach Blanket Bingo. Wednesday, July 13, 6:00-8:00 pm at White Sands Beach. Price: \$5 or \$20/family. Pizza dinner is included. Join us at the beach for an evening of family fun and B-I-N-G-O! Prizes awarded to winners. Make sure to bring your beach blanket, bug spray and your appetite. Event will be postponed in the case of inclement weather. Please check our website www.lysb.org prior to event for possible weather cancellation. Open to all Lyme/Old Lyme families.

Sitter/Safety Class. Monday, July 25 through Thursday, July 28, 12:00-2:00 pm. For grades 6 and up. Fee: \$50 includes supplies, guest speakers. This is an intense sitter safety course appropriate for babysitters, big brothers and sisters, and children staying at home alone for the first time. This course will teach a variety of safety issues, basic first aid, fire safety, 911 skills. Pre-register at 860-434-7208 x0.

CPR For Babysitters. Friday, July 28, 12:00 to 1:30 or 1:45-3:15 pm. Add this valuable class to your LYSB babysitter's course and learn how to save a life! Learn CPR and how to clear a blocked airway in children and infants. Parents want to hire babysitters who know CPR. Our instructors will teach you to provide life-saving care during a cardiac or choking emergency. Fee: \$45 and includes a Certificate of Completion. Pre-register.

Engineering Camp: Hands On, Minds On. Monday, August 1 through Friday, August 5. Ages 5-8: 9:00 am to 12:00 pm. Ages 9-14: 1:00 to 4:00 pm. Discover the marvelous world of engineering through the hands-on, minds-on camp offered by Engineering Imagination. Participants will use a variety of mediums such as LEGO, recycled materials, salvaged



motors and gears, balsa wood, and more to explore the STEM (Science, Technology, Engineering, Mathematics) curriculum. Build projects such as hydroelectric waterwheels, model rockets, and scale bridges! With activities focused on green engineering, mechanical engineering, chemical engineering, and architecture, your child is sure to have a blast while learning along the way. Fee: \$150. Register online www.lysb.org or call 860-434-7208.

Best of Pinterest Arts & Crafts Camp. Monday, August 8 to Thursday, August 11, 10 am to 12 pm. For Grades 3-8 and up. Fee: \$50. Our favorite crafts from Pinterest. Includes supplies and snacks. Please join us for a fun and interactive craft camp featuring our favorite crafts from Pinterest. Every day we will make a new project that is sure to become a treasured keepsake. If you register for both camps this week (see Hip Hop Highlights below), bring your lunch and stay. Register online at www.lysb.org or call 860-434-7208 x0.

Family Movie Night. Wednesday, August 10th at 7:00 pm. Please join us for an outdoor movie night at White Sands Beach. This is a FREE event, but donations are welcome. Snacks will be sold. Movie TBA, so please check our website for announcement and weather related cancellation. Open to all L/OL families.

Sewing Camp. Monday, August 15 to Friday, August 19, 9 am to 12:00 pm. Ages 8 and older, Fee: \$150 (discount of 15% if registering for both morning and afternoon camps). Let's get sewing! Here's your chance to learn machine and hand sewing as well as embroidery techniques. Design and stitch a summery beach bag, simple tee shirt, cuddly stuffed animals, and more. Sewing machines and supplies provided. No prior sewing experience needed. Led by arts educator Claudia Mathison. Open to residents of all area towns. Register online at www.lysb.org or call 860-434-7208 x0.

Summer Crafts & Cooking. Monday, August 15 to Friday, August 19, 1:00 pm to 4:00 pm. Ages 7 and older, Fee: \$150 (discount of 15% if registering for both morning and afternoon camps). A summer celebration of crafts and cooking! Design and create beautiful woven baskets, mosaic shell frames, leaf printed tees, painting on canvas and more. Learn new culinary skills cooking seasonal jams and yummy desserts. Led by arts educator Claudia Mathison. Open to residents of all area towns. Register online at www.lysb.org or call 860-434-7208 x0.

Continued on page 35



The Paper Doll Project. Inspiring Strength in Sisters – No Girl is Ever Alone! Monday, August 22 & Tuesday, August 23, 10:00 am – 3:00 pm. For middle school girls. Fee: \$50. Bring your lunch. The Paper Doll Project is a community outreach program dedicated to alleviating bullying and building bonds and friendships in teenage girls. We will focus on self-esteem, self-advocacy and self-acceptance through yoga, meditation, and various and fun bond-building activities. Strength in Sisters is a concept promoting “No Girl is Ever Alone!” It has such a strong message for girls and bares so much importance for forming bonds and trust while inspiring each other to live out to our strongest potential self. This is a special way to end your summer before school begins. Fee \$50, scholarships available. Register online at www.lysb.org or call 860-434-7208 x0.

Back To School Ice Cream Social. Tuesday, August 30th, 1:00 -2:30 pm. For middle schoolers. After you visit the middle school and your new teachers, stop by the LYSB for ice cream. FREE.

LYSB Summer Programs for Early Childhood & Families

On Your Mark, Get Set... Read! Mondays at 10:30 am, starting at Old Lyme-Phoebe Griffin Noyes Library & journeying to LYSB after story time. FREE. As part of a special collaboration between the LYSB and OLPGN Library, toddlers and caregivers enjoy a series of three special events highlighting reading, playing and nature! The fun begins with story time and special guest reader at the OL-PGN and ends with a themed craft or activity at LYSB. **Monday June 13th:** Playtime, Imagine the Possibilities. **Monday July 11th:** Round and Round We Go! **Monday August 8th:** Back to Nature & Scavenger Hunt. Register at www.lysb.org or call 860-434-7208 x0.

Delightful Dandelions. Tuesday June 28th 10-11:15 am. Ages 3.5-6 years. FREE. Have you ever wondered how dandelions got to America, or why they are called the children's flower? Or why they are so important for Honey Bees? Did you know the flowers, leaves and roots are edible and can be used to make crafts? In this class we will learn about this wonderful little flower that is both beloved and scorned with Karen Parker a Clinical Herbalist, Massage Therapist and beekeeper living in Old Lyme. More details and registration at www.lysb.org.

Studio 80 Sculpture Garden Field Trip. Tuesday July 12th 10-11:30 am. Ages 3 and Up. FREE. Just a hop and a skip away from LYSB is the lovely sculpture gardens of Studio 80 created by Gilbert Boro. Join us for this *en plein air* tour & walking trip from LYSB. Children and parents will enjoy seeing, touching, and walking through the 100 contemporary sculptures on Mr. Boro's unique 4.5 acre property. Children will also have time to create their own artwork. Register at www.lysb.org or call 860-434-7208 x0.

1-2-3 MAGIC: Effective Discipline for Children 2-12. Two Tuesdays July 19th & July 26th 9:30-11:30 am. \$20 per family Child care available (must be reserved). Parents! Who's in charge at your house? A humorous look at parenting, a serious look at discipline. In this two part workshop you will learn:

- How to control obnoxious behavior
- How to discipline without arguing, yelling or spanking.
- How to handle the 6 kinds of testing and manipulation.
- 5 tactics for encouraging good behavior.
- What to do about bedtime, messy rooms, lying & chores.
- Homework, practicing and more.
- How to strengthen your relationship with your child

Babies Summer Drop In Group. Ages newborn to age 2. 9-12 noon. FREE. An open forum for parents and children to gather. Mondays June 20th & 27th. Mondays July 18th & 25th. No registration necessary.

Mixed Age Playgroups. Wednesdays 9:30-10:40 am. FREE. Theme based on a special story each week this group enjoys corresponding finger plays, group songs, free play, & a craft. Build new resources and friends for you and your family while visiting with other adults. Join anytime, fees can be prorated. Scholarships available. Register at www.lysb.org or call 860-434-7208 x0. Wednesday June 1st – Pirates. Wednesday June 8th – Five Senses.

Summer Playtime. Wednesdays June 15th – July 27th (no group 7/6) 10-11:15 am. Ages 2 and up. Fee - Donations greatly appreciated. This mixed age group combines fun summer activities and crafts with time for exploring our own playground or enjoying the cool air at Mimi's Place. Please sign up for each individual group at www.lysb.org.

June 15th: Bubbles. Make your own bubble solution and bubble snake maker. **June 22nd:** Kite Making 101. **June 29th:** Make your own Swimming Pool Noodle Pony. **July 13th:** Erupting Watermelons. **July 20th:** Frozen Sidewalk Chalk. **July 27th:** Rubber Band Splatter Painting.

Play with Your Food: Books, Kids & Food Playgroup. Ages 2 and up. 10 - 12 noon. Taco-bout a fun playgroup for children ages 2 -5. This book themed preschool cooking class combines books, children creating special foods, and edible crafts. Join us for two sneak peek days free. Themes TBA. **June 23rd & 30th:** Registration deadline is 6/20 for both June groups. **July 14th & 21st:** Registration deadline is 7/11 for both July groups. **Fee:** Donations greatly appreciated. Register at www.lysb.org or call 860-434-7208 x0.

**For town updates & information:
www.oldlyme-ct.gov**

Trash and Recycling

Curbside trash removal is performed by Old Lyme Sanitation (860-434-3800). There is **no trash pick-up on the following Holidays:** Christmas (December 25), New Year's (January 1), Memorial Day (last Monday in May), July 4th, Labor Day (first Monday in September), and Thanksgiving Day (fourth Thursday in November). Trash normally collected on Thanksgiving is picked up the next day, along with the regular Friday pickup. For other holidays, trash pickup moves to the following day, until Thursday and Friday, which remain on schedule. Please be advised that Old Lyme Sanitation DOES NOT take off the same Holidays as the Town does.

Please have trash container out at curbside by 6 am on your assigned day. Containers should be three feet away from any other objects, such as mailboxes, cars, other containers, planters, etc. Please be mindful not to block breakdown/emergency lane with receptacle. **Clearly mark your address on recycling and trash receptacles to avoid mix up, removal or displacement of cans.** Phone Michele Hayes (860-434-1605, ext. 212) with any additional trash removal questions that you may have.

Single stream curbside recycling pick-up is provided for clean bottles, cans, #1 - 7 plastics and paper products co-mingled in the green recycling carts every other week. Corrugated cardboard boxes need to be flattened for recycling. A complete list of acceptable single stream recyclables is available on the Town's website (www.oldlyme-ct.gov) – click the trash and recycling link on the Selectman's or Public Works pages or at www.shorelinesanitation.com. Information is also

available in the Selectman's Office at the Memorial Town Hall, 52 Lyme Street, and at the Landfill/Transfer Station on Four Mile River Road. Please phone Michele Hayes (860-434-1605, ext. 212) with any additional questions you may have.

Curbside recycling is performed **every other week** by Old Lyme Sanitation (860-434-3800). There is **no recycling pick-up on the following Holidays:** Christmas Day (December 25), New Year's (January 1), Memorial Day (last Monday in May), July 4th, Labor Day (first Monday in September), and Thanksgiving Day (fourth Thursday in November). Recycling normally collected on Thanksgiving is picked up the next day, along with the regular Friday pickup. For other holidays, recycling pickup moves to the following day, until Friday, which remains on schedule. Recycling information is available on the Town's website (www.oldlyme-ct.gov), as well as in the Selectman's Office at the Memorial Town Hall, 52 Lyme Street, or at the Landfill/Transfer Station on Four Mile River Road. **Clearly mark your address on recycling and trash receptacles to avoid mix up, removal or displacement of cans.** Phone Michele Hayes (860-434-1605, ext. 212) with additional questions you may have.

Additional automated trash and recycling containers should be ordered through Michele Hayes (860-434-1605, ext. 212) in the Selectman's Office at the Memorial Town Hall, 52 Lyme Street. Containers cost \$80. **Please mark clearly your address on recycling and trash receptacles to avoid mix up, removal or displacement of cans. Homeowners are responsible to replace lost, stolen or broken cans at their expense.**

Dog Licenses

Dog licenses will be available in the Town Clerk's office in June and should be purchased by June 30.

Fee: Male or Female - \$19

Neutered Male or Spayed Female - \$8

Penalty: Late Fee - \$1 per month after June

- All dogs six months or older must be licensed and wear a collar and tag at all times.
- A dog without a tag is presumed to be unlicensed and is not protected by law.
- An assigned tag must be used on the dog described in the license bearing the corresponding number.
- A dog owner is liable for damage done by owner's dog, including damage to shrubs, flowers or trees.

- All dogs must be vaccinated against rabies and proof of the vet's certificate must be submitted to the Town Clerk when licensing a dog. (Per CGS Sec. 22-338).
- Owners of roaming dogs are liable to prosecution.
- When a spayed or neutered dog is licensed for the first time, a certificate from a licensed vet must be presented.
- If application is made by mail, make check payable to: Town of Old Lyme. Please enclose a self-addressed, stamped envelope.

Mail To: Town Clerk, 52 Lyme Street, Old Lyme, CT 06371.

Please notify the Town Clerk of any dogs who are deceased or have moved from Old Lyme. 860 434-1605, Ext. 221 or 220.

Recycling in Old Lyme

Did you know that recycling is **mandatory** in Connecticut? Everyone **must** recycle. This includes residents in single or multi-family buildings, every business, and all public and private agencies and institutions (e.g. schools, colleges, and medical facilities).

It's the Law!

Connecticut has adopted various solid waste management requirements to promote recycling of specific material types. Some items are mandated to be recycled pursuant to DEEP regulations, state statute, and local ordinance. That means Old Lyme may recycle items differently than other towns as long as the state mandated items are recycled.

Connecticut has a goal of reducing, reusing and recycling 58% of our municipal solid waste by the year 2024. Old Lyme now has its own recycling committee, formed in 2015, to work on this goal. (www.ct.gov/deep).

By recycling, you will be protecting the environment, and as a result, protecting your health as well. Recycling:

- Reduces the amount of waste to incinerate or landfill

- Prevents or reduces air and water pollution
- Conserves water and precious natural resources – since less raw materials need to be extracted and processed
- Saves energy – In 2011, EPA reported the energy savings from recycling and composting accounted for roughly 1.1 quadrillion Btu in energy savings
- Makes us more sustainable because we are borrowing less energy & materials from our children's future.
- Reduces greenhouse gas emissions. (www.ct.gov/deep)

Helpful links: CTDEEP's "What do I Do with..? how to recycle or dispose of that not-so-common item. <http://williwaste.com/Resources.ashx?id=f6bad8ff-3307-4eeb-bd6c-8547f768e574>.

Town of Old Lyme Trash/Recycling link: http://www.oldlyme-ct.gov/Pages/oldlymect_bcomm/trash

Color Flyer of what can/can't be Recycled in Old Lyme <http://williwaste.com/Resources.ashx?id=f6bad8ff-3307-4eeb-bd6c-8547f768e574>.

events online

For the latest issue plus archives
go to

eventsmagazines.com

Find your town • Click on the masthead for this quarter's issue • Scroll down for archived issues

Old Lyme Conservation Commission

Water: A Precious Resource

The disturbing news of Flint Michigan's contaminated public water supply makes us take a closer look at how we safeguard our own precious water resource. Public water supplies are regulated and monitored by the state, but homeowners with private wells are responsible for the quality of their own water. So what should homeowners with wells be doing to protect their water supply?

The Connecticut Department of Health has many good answers in a document titled *Private Drinking Water In Connecticut, Publication 24: Private Well Testing* (link is below). Homeowners are instructed to test their private wells annually, even if no problems seem to exist. The recommendations for items to test include:

Potability:	Every year, and after well repairs or replacements
Lead:	At least once (additional testing during pregnancy or with young children)
Arsenic, Uranium, Radon:	At least once
Volatile Organic Compounds:	At least once
Fluoride:	Every 5 years when a child under 12 is present

It is worth checking the Department of Public Health website to understand the reason for each of the recommended tests,

as well as what are the acceptable limits for each substance. The DPH provides a link to state certified labs and specifically which tests the labs are certified to perform.

One of the most important things a homeowner can do is to protect his or her well from contamination:

- Keep pet waste away from your well.
- Have your septic system pumped regularly. The Town Ordinance requires pumping every 7 years.
- Do not use pesticides, herbicides, fertilizers, or hazardous materials near the well.
- Do not allow road, driveway, or roof runoff to collect around your well.
- Keep geese off your property.

Water is a precious resource that we cannot take for granted, but with some good understanding of what affects our water supply, we can maintain our water quality.

http://www.ct.gov/dph/cwp/view.asp?a=3140&q=400544&dphNav_GID=1828&dphPNavCtr=#48151

<http://www.epa.gov/privatewells/about-private-water-wells#basic>

http://www.epa.gov/sites/production/files/2015-11/documents/2005_09_14_faq_fs_homewatertesting.pdf

http://www.ct.gov/dph/lib/dph/environmental_health/eoha/pdf/24_residential_drinking_water_well_testing.pdf



Lyme Art Association

American Waters: A Marine Exhibition. On view: June 10 to August 26. Opening Reception: Friday, June 17, 5-7 pm. Visitors of all ages will enjoy this summer exhibition of marine work by the Lyme Art Association members as well as American Society of Marine Artists members, in our historic, sky-lit galleries. Separate, five-week exhibitions will be on view in the Goodman Gallery: Connecticut Pastel Society from June 10 to July 15, and Celebrating Lyme's Beauty (in partnership with the Lyme Land Conservation Trust) from July 22 to August 26. Gallery hours are Wednesday-Sunday, 10 am-5 pm, or by appointment. Admission is free but a \$5 donation is suggested. Lyme Art Association, 90 Lyme Street, Old Lyme (860)434-7802; lymeartassociation.org

Old Lyme Fire Department Auxiliary

The Old Lyme Fire Department Auxiliary will hold their Fall Lobster Fest on Saturday, September 10, at the Lyme Street Firehouse, 69 Lyme Street, from 4-7 pm.

The meal includes lobster, chowder, corn, roll, soda/water. Hotdogs will also be available.

Tickets will be limited and sold in advance only. Cost will be based on market price of lobster.

Tickets will be available in late July at Old Lyme Seafood or by calling 860-434-5472. Proceeds will benefit ongoing projects of the Old Lyme Fire Department and Auxiliary.

Rogers Lake Authority News

The Rogers Lake Authority deploys a patrol boat on Rogers Lake for 30 hours a week during the summer months to promote safe activities on the lake. We are asking for your assistance in reporting unsafe activity occurring on Rogers Lake anytime of the year. To report any unsafe activities, please use the form that is available on the Rogers Lake Authority website:

http://www.oldlyme-ct.gov/Pages/OldLymeCT_BComm/rogers_lake/index?textPage=1 Click on "Report Boating Violation." Thank you for your assistance.

NOTE: As of October 2015, if you tow anyone behind your boat, you must have a Safe Waterskiing Endorsement along with your Save Boating Certificate. See the DEEP website at http://www.ct.gov/deep/cwp/view.asp?a=2686&Q=571362&deepNav_GID=1620

Wanted! Safe Boaters on Rogers Lake

6 MPH Speed Limit. Before 10 am and after sunset and within 100 feet of shore, rafts or other boats.

Jet Skis. Only allowed 10 am to 6 pm weekdays and 7 pm weekends. Wakeless speed (6 mph) within 200 feet of shore, rafts or other boats.

Traffic Pattern. At speeds above 6 mph, go in a counterclockwise direction. Keep islands on your left when going North. Go one-way South on West side of Picnic Island.

Senior Center Summer Concert Series

Come and enjoy a summer evening at the Lymes' Senior Center, 26 Town Woods Road for "Summer Sounds" a five week musical series. All Ages Are Welcome.

Bring your chairs, blankets, dinner, etc. the performances will be held out on the lawn (weather permitting) or inside if the weather is inclement. A free ice cream social will follow all concerts!

July 7th at 7:00 pm. The Corvettes Doo Wop Revue.

July 14th at 7:00 pm. The Cartells.

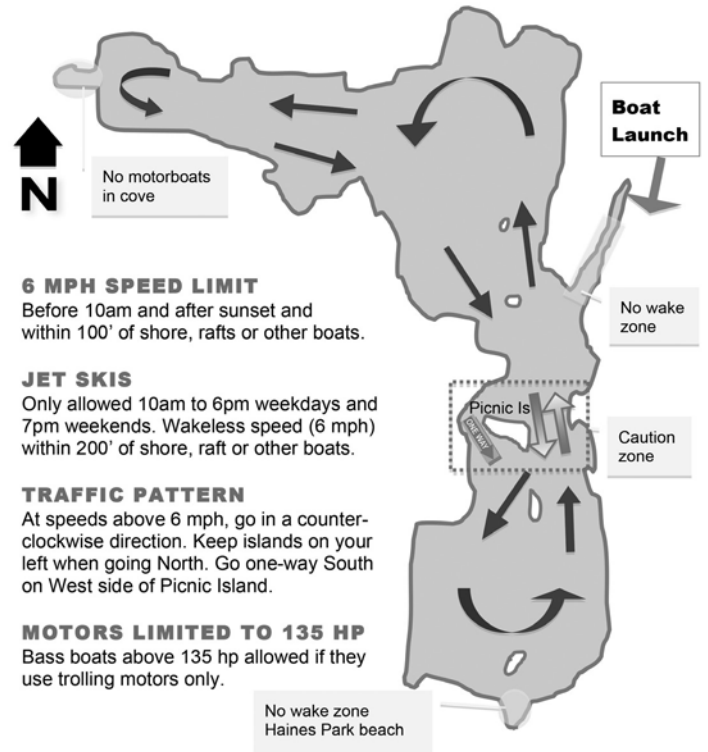
July 21st at 7:00 pm. The Long Island Sound Band.

July 28th at 7:00 pm. US Coast Guard Dixieland Band.

August 4th at 7:00 pm. United States Navy Pops Ensemble.

WANTED!

Safe Boaters on Rogers Lake



Beach Sticker Information

Beach Stickers are available on line at the Town's website (www.oldlyme-ct.gov) beginning during the month of May or in the Selectman's Office, Monday through Friday, 9 am – 3 pm. Price for a beach sticker is \$25 and \$20 for senior citizens over 60. Car registration must be shown and additional proof of property ownership (if vehicle is registered in a place other than Old Lyme) may be required at time of purchase. Please note the cost for replacement stickers are \$25 unless the original sticker is returned (regardless of condition). In addition, weekly cottage renters (with lease dates) can request a temporary beach pass for use during their stay for \$25, and we also offer a temporary pass for \$10 for other special circumstances. Please visit the Selectman's Office or phone Michele Hayes (860.434.1605, ext. 212) for details and purchase of these passes as well as additional questions you may have. Thank you.

Old Lyme Phoebe Griffin Noyes Library

Sign up for our E-Newsletter at: WWW.OLDLYME.LIONINC.ORG. The Library does not distribute or sell our patron email list to any commercial or nonprofit business. Register for programs at www.OLDLYME.LIONINC.org, select the program listing on the Calendar tab or call the Library for assistance. All programs are free and open to the public unless otherwise noted.

Adult Programs

Tuesdays June 7 & 14 from 1 pm - 3 pm Basic Photography with Steve Nadler. Designed to teach the skills needed to understand your basic camera operation. Time outdoors to learn and use your newly acquired skills included.

Thursdays June 9 & 16 from 6- 8 pm Intermediate Photography with Steve Nadler. Designed to allow photographers to advance their skills beyond the basic level. Techniques include lighting, exposure, aperture, shutter speed, ISO and white balance. Time outdoors included.

Friday June 28 from 6 pm – 8 pm Lawn Concert: An Evening with Larry Kaplan, a New England based singer/songwriter best known for his consummate storytelling style with themes of the sea and rivers, historical events and ballads of rural life. Bring a chair/ blanket and supper to enjoy on the lawn.

Tuesday June 28 Book Launch Party for Beatriz Williams' *A Certain Age* (Time TBA). The bestselling author of *A Hundred Summers* brings the Roaring Twenties brilliantly to life in this enchanting and compulsively readable tale of intrigue, romance, and scandal in New York Society.

Friday July 15 from 5-7 pm Summer Art Exhibition & Reception: *Touching Water* with Roxanne Steed. Roxanne has lived in some of the most beautiful towns on the Atlantic and Pacific coasts as well as traveled to Hawaii, Singapore, Italy, France, England and Ireland.

Tuesday July 19 at 7:00 pm Summer Sizzle Book Discussion: *The Improbability of Love* by Hannah Rothchild, Hosted by facilitator Marsha Bansavage, a CT Humanities discussion leader and a special guest TBA. A dazzling, witty and tenderly savage satire of London life and the art world that is also a surprising and wonderful love story. Shortlisted For The Baileys Women's Prize For Fiction 2016.

11 am Phoebe's Book Chat. Meets the second Thursday of the month: June 9, 2016: *The Abstinence Teacher* by Tom Perrotta; July 14, 2016: *A Tree Grows in Brooklyn* by Betty Smith; August 11, 2016: *Longbourn* by Jo Baker; September 8, 2016: *H is for Hawk* by Helen Macdonald

Teen Programs

Teens in grades 6-12 can sign up for Summer Reading "Get in the Game" and enjoy gift cards to local businesses plus be

entered into our grand prize raffle. Call Young Adult Librarian Jane Frankel for more information.

Friday, June 3rd from 2:30 pm - 4:30 pm Summer Reading Kickoff – Henna with Heather Caunt-Nulton: Each participant receives a henna design drawn by Heather from her naturally created henna dyes.

Monday June 6th from 3:00 pm – 3:50 pm - Living in Space with the CT Science Museum: Participate in hands on experiments and discover what it's like to be an astronaut.

Saturday, June 11 from 10 am-2 pm – Summer Reading Registration Day: Kids in grades 6-12 who register will automatically win a prize. Check our website for more summer reading details!

Monday, June 13 from 3-4 pm – Stone Painting: Learn how to design and paint rocks to make a variety of creative designs.

Thursday, June 16th from 3– 4 pm – Didley Bows: Musician Dan Stevens will help you build your own simple guitar and teach you how to start playing it. Every participant goes home with their own musical instrument.

Monday, June 20th from 3-4 pm – Jeopardy! Come test your trivia knowledge about everything from movies to young adult books and win prizes! Grades 6-12 (part of "Get in the Game," teen Summer Reading program. Teens do not need to be in the summer reading program to sign up).

Thursday, June 30th from 3-4 pm – Pokemon Bingo: Play Bingo using your favorite Pokemon characters! Grades 6-12. Snacks provided.

Monday, July 11th from 3 – 4 pm – Create Your Own Olympics: Design your own Olympic flag, decorate Olympic medals, and make sports themed perler bead ornaments.

Monday, August 1st from 3-4 pm – Minute to Win It: How much can you do in just sixty seconds? Play fun games and win prizes!

Monday, August 15th from 3-4 pm - Cupcake Wars: Decorate cupcakes to go with the theme of your favorite book. Win prizes for different categories, such as 'most creative' and 'most colorful.'

Thursday September 1st from 3-4 pm - Teen Summer Reading Finale Party – Celebrate the end of summer reading with our Masquerade party! We'll have snacks, make our own masquerade masks, play games, and announce our grand prize winner. No need to be present to win. Contact Jane Frankel for more information.

Children's Programs

When children aged pre-K through 12th grade sign up for Summer Reading or Summer of Numbers, they'll enjoy gift cards to local businesses, get entered into our grand prize raffle, and experience our amazing programs. Call Jane Frankel for more information.

Continued on page 41

Friday, June 10, 6:30-7:30 pm – Sciencetellers “Power and Energy” Show: Summer Reading Kickoff! Meet the Sciencetellers as they combine storytelling and exciting science experiments. They make things bounce, fly, and transform to go along with their exciting stories. Pre-K to 8th grade. This event will take place at Old Lyme Town Hall.

Saturday, June 11 from 10 am-2 pm – Summer Reading Registration Day: Sign up for a summer full of great books, fun prizes, and programs that will have you on the edge of your seat! Pre-K through 12th grade.

Monday, June 13, Monday, July 11, & Monday, August 8 at 10:30 am – “On Your Mark, Get Set, Read” Story Time Series:

As part of a special collaboration between the LYSB and the OL-PGN Library, preschoolers and caregivers are invited to 3 special events: story time at the library and a special activity at the LYSB. Registration is required.

Thursday, July 14, 4-5 pm –Mr. Magic. A family friendly magic show with magic veteran Richard Rothstein. Children of all ages welcome.

Friday, September 2, 4-5 pm – Summer Reading Finale Party: Don’t miss our summer reading celebration where we reveal the winner of our grand prize drawing! Even if you’re not the lucky champ, we’ll still have plenty of fun. Grades K-5 welcome.

Lyme-Old Lyme High School Receives Top Ranking from *US News & World Report*

Marketing Initiative Launched to Retain, Attract Students in an Era of Declining Enrollment

In the 2016 U.S. News & World Report Best High Schools rankings, Lyme-Old Lyme High School was recognized as a Gold Medal award winner ranking number eight in the state of Connecticut, number four hundred and twenty nine nationally, and number one hundred and seventy three on a national STEM (Science, Technology, Engineering, and Math) ranking. No other school system in either New London or Middlesex county was in the top ten in Connecticut nor were any of our perennial challengers along the shoreline included in this prestigious group. This, combined with numerous other awards and recognitions, solidifies the notion that the Lyme-Old Lyme Schools provide exceptional academic programs commensurate and oftentimes superior to both public and private schools throughout Connecticut. Our efforts to maintain such programs in an era of declining enrollment have led us on a new mission of marketing our top ranked product.

This marketing initiative is focused on the retention of our current students and the recruitment of students who currently attend private or magnet schools, students who live in other towns and wish to attend our schools on a tuition basis, and students whose families may be considering moving to the Connecticut shoreline. It is our hope that the efforts and monies put toward this initiative will pay dividends over time allowing us to continue to offer a private school experience in a public school setting.

What will this mean for the community? The expected outcomes include the continuation of our strong academic and



extracurricular offerings, a potential revenue stream from tuition based students, the ability to attract the best and brightest students and staff members, a social media presence for the school district, and increased publicity across a range of other media outlets.

As a community member you are our greatest ambassador. If you know of a family that is interested in the best school district in the area, encourage them to consider the Lyme-Old Lyme Schools. With a community wide effort, the Lyme-Old Lyme Schools can continue to offer a private school experience in a public school setting.

Rankings / Awards for Lyme-Old Lyme High School

- Gold Medal award
- National Rank: #429
- State Rank: #8
- National STEM Rank: #173

Ian Neviasser, Superintendent, Lyme-Old Lyme Schools

'Summer Sculpture Showcase 2016' on View at Studio 80 through August

All Welcome to Attend Opening Reception, June 10

Gilbert Boro, owner and sculptor at Studio 80 + Sculpture Grounds in Old Lyme, is hosting an exciting new sculpture exhibition on the expansive grounds of his studio during the summer of 2016. This juried exhibition features the selected works interspersed among Boro's own, primarily large-scale, contemporary sculptures along with works by 13 other contributing artists. The beautifully landscaped grounds, which comprise some 4.5 acres, offer a unique *plein air* experience for the exhibition on the banks of the Lieutenant River in the heart of the Old Lyme Historic District.

The exhibition follows on from the highly successful, inaugural Summer Sculpture Showcase held last year for which works by 12 acclaimed sculptors from across the country were accepted. The show was so successful that it was extended for almost two months to accommodate the large number of visitors to the grounds. Entries this year have far exceeded those from 2015 and so it is anticipated that the 2016 Showcase will feature more sculptors than last year.

This 2016 Summer Sculpture Showcase will be on view through Monday, August 29, and features an Opening Reception on Friday, June 10, from 5 to 7 pm. All are welcome to attend the reception and wander the beautiful gardens to view the works.

This second annual Summer Sculpture Showcase offers a unique opportunity for established sculptors to exhibit their work in a different location, while also effectively creating a new exhibition within the Sculpture Gardens. Boro comments, "I'm delighted to be able to open my grounds to sculptors both nationally and internationally, who are looking for a new venue to exhibit their work. It also serves to refresh our ongoing exhibition since we generally relocate pieces in the



'Mega Dandelion' by Gints Grinbergs. View of the Sculpture Grounds at Studio 80.



ongoing exhibition to accommodate the new, selected works.

Boro has been deeply involved in the arts for more than 50 years enjoying an extraordinary and distinguished career as a professional architect, educator and international design consultant, but through it all he has been a sculptor. He has degrees from Duke and Columbia Universities and has also received a wide range of fellowships and awards. His work has been exhibited in galleries, art centers and public art venues across the US and throughout Europe and also purchased by private collectors, corporations and foundations.



"Nest" by Gilbert Boro.

The Sculpture Gardens at Studio 80 at 80-1 Lyme Street in Old Lyme is open daily from 9 am to 5 pm Admission is free and all ages are welcome.

Contact the Studio 80 office at 860.434.5957 or visit www.sculpturegrounds.com for more information or to sign up for Studio 80 newsletters and view a listing of special events throughout the year.

Old Lyme Visiting Nurse Association

Town nurse Karen Veselka is now working for the OLVNA full time, and her expanded hours are enabling her to develop new educational programs for the community. She continues to hold office hours at the Lymes' Senior Center and to conduct home visits in Lyme and Old

Lyme. In addition, during July and August she staffs the Shoreline Community Center on Tuesdays and Thursdays from 9:30 to 10:30 am.

As the OLVNA expands its programs, we encourage Lyme and Old Lyme residents to consider joining our roster of directors

and associates. From September to June, the directors meet on the second Monday of each month at Town Hall at 1:00 pm. If you're interested in learning more about our goals and efforts, we hope you'll get in touch with us at 860-434-1222 or oldlymevna@gmail.com.

Celebrating the 30th Anniversary of Midsummer Festival at the OLPGN Library

Saturday July 30

9:30 am – 4 pm. Friends of the OL-PGN Library Indoor & Outdoor Book Sale. Paperbacks on the lawn - mystery, fiction and non-fiction. Visit the BookCellar for a huge variety of Children's and Adult books in hard and soft cover at half price. (Collectibles excluded). **10 am-12 pm – Simply Enchanted** presents Jedi Training with Rey. Channel your inner hero or heroine and complete your Jedi training with special guest Rey on the Library Lawn! A meet and greet and photo op will follow. **12 pm-2 pm - April's Balloon Creations.** Stop by the Library Lawn to watch April twist and turn ordinary balloons into whimsical creations you can take home as keepsakes. **10 am – 4 pm Star Wars Crafts.** Make your very own lightsaber using upcycled pool noodles, duct tape and electrical tape. Then, “use the force” to craft your very own paper bag Yoda puppet.

Artisans Corner at Midsummer

Mary Anne Sherman Jewelry Designs - Whimsical wearable art made by hand; **Six Paca Farm** - High quality alpaca products: hats, scarves, sweaters, vests, ponchos and rugs plus a large inventory of natural and dyed yarns from our own animals; **Sparkease Tie Dye and Marbling** - Brightly colored tie dyed garments for the entire family, including short and long sleeve shirts, dresses, onesies as well as marbled bucket hats, caps and visors; **Reverse Painting on Glass by Sharon White.** Seaside and nautical imagery for the home; **Absinthine Jewelry by Michaelle Pearson** - Inspired by history and crafted from unique materials such as carved gemstones and bone beads, sustainable corals and baroque pearls set in gold and silver; **Lyme Tree Woman's Exchange of Old Lyme** - Handcrafted gifts including children's clothes and toys, decorative gifts for the home, gourmet food, linens and collectibles; **Nutmeg Naturals** - Specializing in handmade soap, natural laundry and home cleaning products with no artificial ingredients; **Lakota Indians Tribal Crafts** - Art, crafts and jewelry made by Lakota Native Americans of the Cheyenne River Reservation in South Dakota; **Connecticut Authors Talks from History Press** - The rich history of the Connecticut River Valley will be explored in several author talks on our fabled waterways, infamous pirates, our culinary past and well-crafted wines from regional vintners; **Frank's Mobile Kitchen** - Handmade, tossed Napolitano-style pizzas, calzones, and breads baked in an artisan wood-fired oven using fresh locally grown food.

William Pitt | **Sotheby's**
INTERNATIONAL REALTY

ESSEX ART STUDIO EXTRAORDINAIRE ! Entering this home of a Renowned Artist/Layerist, you will be transformed from the mezzanine, as you overlook this professionally designed 1500 sqft work area. N10121678 Offered at \$599,000

OLD LYME A Masterpiece in Old Lyme. This 2001 architecturally designed home features the perfect "Now" living. Covered Blue Stone entrance to a 16' cathedral ceiling foyer. Sited on almost two acres on one of the highest points in Old Lyme. N10110296 Offered at \$1,250,000

The Shannehans
203.247.0020/860.575.6583
theshannehans@wpsir.com

williampitt.com
ESSEX BROKERAGE | 13 MAIN STREET | 860.767.7488
OLD LYME BROKERAGE | 103 HALLS ROAD | 860.434.2400
Each Office is Independently Owned and Operated

Triangle Building Associates
Inc.

Carpenters  **Builders**

General Contractor
Remodeling Projects
Complete Additions
Custom Homes

ESSEX, CT
860-767-1272
email: trisquare2010@att.net

NH Lic#0003590 HIC Lic# 0556517 Suffolk Cty NY Lic# 41997-H

Christy Laurence Realty LLC

Since 1985

P.O. Box 4022 ~ Old Lyme, CT 06371



Christy Laurence
Real Estate Broker

GRI, ABR, CIPS, AHWD, EPRO

mobile 860.235.0104

fax 860.434.1371

email Christy@christylaurence.com

web ChristyLaurence.com

*Your Personal
and Family Realtor
for Life*



The Florence Griswold Museum

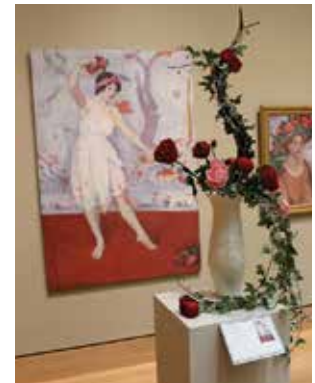
It's All About Gardens at The Florence Griswold Museum This Summer



Violet Oakley, *June*, c. 1902. Pennsylvania Academy of the Fine Arts.



Maurice B. Prendergast, *Promenade*, c. 1915-18. Pennsylvania Academy of the Fine Arts.



During *Blooms with a View*, floral artists interpret works of art in the exhibition *The Artist's Garden*.


Organized by the Pennsylvania Academy of the Fine Arts, *The Artist's Garden: American Impressionism and the Garden Movement, 1887-1920* is the first exhibition to situate discussions of the growth of the Garden Movement and American Impressionism within the politics of the Progressive Era – a period known for both a surge in nationalism and growing anxieties about immigration, urbanization, and women's suffrage. From June 3 through September 29, paintings, sculpture, and stained glass blend with prints, books, and photographs to explore how art, literature, and social theory played an important role in American culture during the transformative period of 1887-1920. Works by Childe

Hassam, John H. Twachtman, J. Alden Weir, Cecilia Beaux, and Maurice B. Prendergast, among others, illuminate the historical context behind these garden paintings and inspire relevant discussions for the 21st century. This exhibition is generously supported by CT Humanities.


The Museum's historic gardens and landscape are the perfect backdrop for this exhibition. GardenFest, a favorite seasonal event, also begins June 3 and runs through June 12.

Garden Gang Plant Sale. Friday, June 3, 9 am-3 pm. Select from heirloom perennials, roses, herbs, succulents, and garden books and containers.


Continued on page 45



SHORELINE PERIODONTICS PC



Dr. Gregory Toback
is pleased to welcome
Dr. Marianne Urbanski



"Our practice is committed to providing patients with state-of-the-art treatment for all forms of periodontal disease in a comfortable and caring environment."

**Dental Implants
Laser Gum Surgery
Esthetic Gum Surgery**

Free Implant Consultations

NEW LONDON, CONNECTICUT
190 Hempstead St
New London, CT 06320
860-443-2428

www.shorelineperio.com

Flowers, Fields, and Farmlands: Getting to Know Connecticut's Historic Gardens. Saturday, June 4, 10 am-4 pm. Learn about the members of the Connecticut Historic Gardens during this day-long event. Included with Museum admission.

Blooms with a View: A Display of Art & Flowers. Friday, June 10 through Sunday, June 12. Enjoy stunning flower arrangements by 15 floral artists interpreting works of art in the exhibition *The Artist's Garden*. Playing off colors, lines, shapes, and subject matter, each

display reflects its inspiration in masterful ways. Included with Museum admission.

These are just a few of the exciting lineup of garden-related activities scheduled. Please check FlorenceGriswoldMuseum.org for a complete list.

Town of Old Lyme Primary Results

REPUBLICAN

Nomination	Votes
Ted Cruz	89
Ben Carson	5
Donald J. Trump	471
John R. Kasich	326
Uncommitted	13

Total Number of Names Checked as Having Voted in Town: 895

DEMOCRAT

Nomination	Votes
Roque "Rocky" De La Fuente	0
Hillary Clinton	477
Bernie Sanders	434
Uncommitted	14

Total Number of Names Checked as Having Voted in Town: 898



860-339-5829
210 Main Street, Old Saybrook, CT 06475



860-664-5450
141 West Main Street, Clinton, CT 06413

Discover Buried Treasures In Phoebe's BookCellar

The Only Bookstore In Town

Phoebe's BookCellar, downstairs at the Phoebe Griffin Noyes Library in Old Lyme, has just launched a "Collectibles" area of first editions, signed copies and more valuable items ranging in price from \$10 to \$150. The new "Collectibles" undertaking has already had substantial success in raising funds for the library, including selling a first edition of Bambi for \$150.

Among current offerings are an edition of Wagner's Nibelung with tipped-in illustrations by Arthur Rackham, a complete set of Samuel Eliot Morison's *History of U.S. Naval Operations in World War II*, and for P.G. Wodehouse enthusiasts a numbered limited edition of his letters to his editor. The BookCellar also has an edition of Cervantes' *Don Quixote* illustrated by Salvador Dali,



Book cover from a 'Collectible' edition of Wagner's 'Nibelung' with tipped-in illustrations by Arthur Rackham.

a 1922 first edition of Henry Ford's autobiography, "My Life and Work" and a five-volume set of Franklin D. Roosevelt's Papers (through 1936) including an introduction by President Roosevelt.



Each week a 'Collectible Book of the Week' is selected and promoted.

Many of these books come from the generous donations of people who are downsizing or moving and no longer have room for collections lovingly assembled over the years. The BookCellar welcomes contributions from everyone looking for a good home for their books, while helping to support the Library too since all proceeds benefit the Library directly.

Continued on page 47



The Growing Garden Center

Riggio's... for the garden and One-of-a-kind Gifts.

- Quality Plants
- Trees & Shrubs
- Fertilizer
- Statuary
- Jewelry
- Garden Décor & Accessories
- Annuals and Perennials
- Garden Décor & Accessories
- Fresh Cut Flower and Cards
- Kid's Gifts and Much More

860-767-0126
136 Westbrook Road, Essex, CT
www.riggiosgardencenter.com



WMRD
1150 - AM
 Middletown - Hartford



WLIS
1420 - AM
 Old Saybrook - New London

**We are
 The Best of the Valley & Shoreline!!**

*News, Weather, Sports, Traffic, Music, Talk
 and Opinion, from around the Corner
 and around the World!!*

We've Got Personality!!!

www.wliswmrd.net

PHOEBE'S BOOKCELLAR...continued from page 46

The "Collectibles" are organized into several categories, including Americana (18th and 19th century editions); Fiction and Poetry; Local Town Histories (Connecticut and Rhode Island); Military History and Multiple Volume Sets. "Mini-catalogs" for these areas are available by email. Prices are generally set at one-third of the average for similar books online, an extremely attractive price point. The BookCellar hopes to increase sales by making these books available to antiquarian and used book dealers who have access to a wider market. To this end, a new monthly newsletter

has been launched, to which anyone may subscribe by sending a request to phoebesbookcellar@gmail.com.

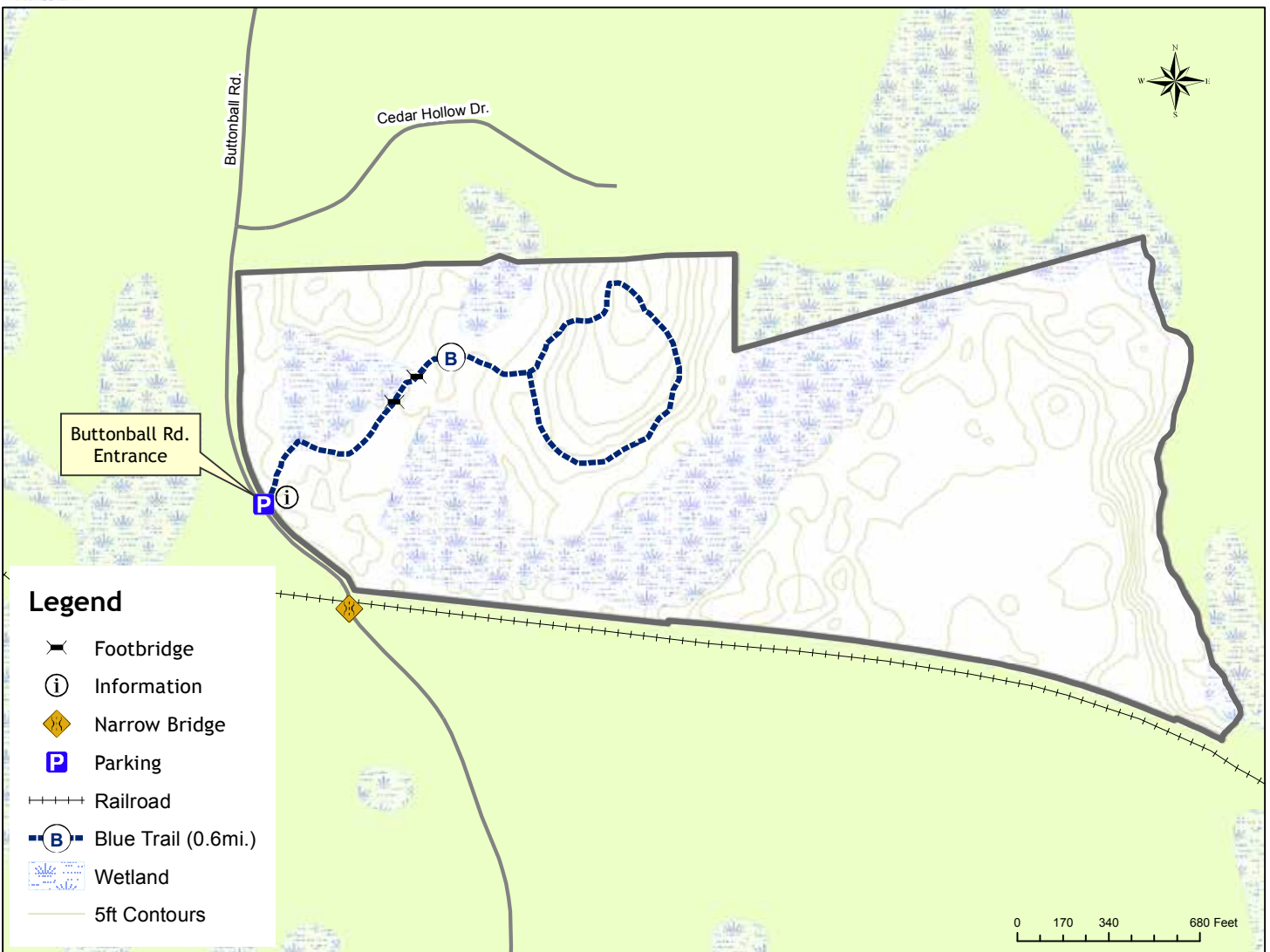
Phoebe's BookCellar is a volunteer-run used bookstore managed by the Friends of the Old Lyme-Phoebe Griffin Noyes Library. Besides the special editions, there is a wide range of gently used books in what is now the only remaining general interest bookstore in Old Lyme. Many best sellers, mysteries, science fiction, history, biography, general literature, DVDs, audio books and children's books, as well as special interest areas such as cooking, gardening, art and photography are to be

found on its shelves. Recent hardcover books are generally priced about \$4, with children's books as well as mass market and trade paperbacks at 50 cents to \$2.

Phoebe's BookCellar is located at the Phoebe Griffin Noyes Library at 2 Library Lane. Opening hours are from 10 am to 6 pm on Wednesdays and 10 am to 2 pm on Saturdays. For further information, including direct inquiries about the Collectibles, contact the BookCellar at phoebesbookcellar@gmail.com. For further information about the library, call 860.434.1684 or visit www.oldlyme.lioninc.org.



**Town of Old Lyme
Bartholemew Open Space (105 Acres)
71 Buttonball Road**



For General Reference Only. LSN 6/10/15

Your Photo Becomes Our Cover



Take a photo capturing the spirit and beauty of one of our **Events** towns and it could be selected to be on the cover. We will be selecting a prize winning photo from the entries in this year's **Chester Fair Town Photo** category. (see www.chesterfair.org for contest rules)

Tree Commission



Three local groups joined together to plant trees at Town Woods Park to celebrate Arbor Day. Pictured left to right Emily Griswold, Lyme-Old Lyme Junior Women's Club and Old Lyme Tree Commission member, Joanne DiCamillo, Chairman Old Lyme Tree Commission, Barbara Rayel, President Duck River Garden Club.

BEAUTIFUL TREES MAKE A HOUSE A HOME.

We're Bartlett Tree Experts, a 100+ year old tree and shrub company with global reach and local roots. Our services include:

- Tree & Shrub Pruning
- Cabling & Bracing
- Fertilization & Soil Care
- Insect & Disease Management



Call us at 203.453.1357 or visit us at BARTLETT.COM  

Assessors Office

Personal Property forms will be mailed at the end of September. Forms are due on or before November 1. A 25% Penalty is imposed on the assessed value if **postmarked** after November 1.

In order for new residents in town to have their **Veteran's Exemption** on their properties; they must file their DD214 (Discharge papers) with the Town Clerk before October 1.

Anyone interest in applying for **Farm, Forest and Open Space** must file an application (available in the Assessors office) and present it to the Assessor between September 1st and October 31st.

Any questions, contact 860-434-1605 ext. 218, Walter E. Kent, Jr. Assessor or Ext. 219 Mickie Fraser, Administrative Assessment Technician. Office hours are Monday through Friday 9 am to 4 pm.

Streetlights

Reporting Streetlight Problems: Please phone Michele Hayes in the Selectman's Office at the Town Hall (860-434-1605, ext. 212) to report a streetlight outage or streetlight issues that you may notice. When reporting a streetlight, please make note of the pole location and pole number. Thank you!



William Pitt

Sotheby's
INTERNATIONAL REALTY

At William Pitt Sotheby's International Realty,
your home is more important
than a number on a graph.
We believe all of our properties are
Extraordinary!



OLD LYME \$1,750,000
The Crown Jewel of
Point O' Woods N10118883
Byron Lazine 860.941.2755



LYME \$1,595,000
A Gracious 18th Century
Residence N10036124
Jennifer & Jane Associates
860.227.6634



OLD BLACK POINT \$1,295,000
Spectacular Views of Long
Island Sound N10121237
Jamie Childs 860.501.2110



OLD LYME \$1,250,000
A Masterpiece In Old Lyme
N10090272
The Shannehan's
860.575.6583



LYME \$1,100,000
The "Modern Barn" One-of-a-
kind Property N10119834
Sue Darmon 860.707.6879
Janet Peckinpaugh 860.985.3659



EAST LYME \$939,000
Elegant & Historic B&B
N10089949
Mariette Woolfson
860.883.3667



OLD LYME \$745,000
Walk to Private Sandy Beach
N10119622
Colette Harron 860.304.2391



OLD LYME \$649,000
Beachfront! Hawk's Nest
Beach N10123326
Kathy Murphy 860.227.7200
Leslie Holland 860.575.5144



LYME \$619,000
Energy Star Rated with
Geothermal Heat N10121639
Allyson Cotton 860.227.6016



LYME \$579,000
The Best Value in Lyme
N10096559
Mike Foley 860.405.5880



OLD LYME \$434,900
One Level Living at its Finest
N10116851
Eric Engdall 860.705.6918



OLD LYME \$259,900
Steps to the Beach from this 5
Bedroom Cottage N10126506
Deb Boyd 860.287.2782

williampitt.com

ESSEX BROKERAGE | 13 MAIN STREET | 860.767.7488

OLD LYME BROKERAGE | 103 HALLS ROAD | 860.434.2400

Each Office is Independently Owned and Operated. Equal Housing Opportunity.

Paris
London
Old Lyme
Beijing
Moscow

Old Lyme Land Trust Celebrates 50 Years of Keeping Tomorrow Green

To mark the 50th anniversary of its founding in 1966, the Old Lyme Land Trust is inviting everyone to visit and enjoy the warm weather and the outdoors at the Trust's open spaces. Thanks to the Old Lyme Land Trust, you can do that at any of 13 preserves right here in town. Check out breathtaking views of the water from the shorefront ledges at the Elizabeth B. Karter Watch Rock Preserve or stroll through the fields to see the river from Whale Back Rock in the John Lohmann Connecticut River Preserve. Look for ladyslipper orchids or listen for frogs – just pick a nearby preserve and you really can't lose. Maps and directions are on the Trust website, oldlymelandtrust.org. And you can like the Trust on Facebook and submit photos of your visits.



Sunset at "Elizabeth B. Karter Watch Rock Preserve."

Old Lyme Land Trust has preserved almost 1,000 acres of Old Lyme, and more than 500 of them have marked trails, open to the public. All of them will be here for your children and theirs, thanks to the generosity of the people of Old Lyme. Old Lyme Land Trust is a non-profit organization, staffed entirely by volunteers and independent of town government. It is through your donations and the work of volunteer stewards

that these properties have been saved and will maintain Old Lyme's rural character into the future. The 2016 Volunteer of the Year Award was presented to Rob Evans for his work blazing trails and building a bridge at the Hatchetts Hill Preserve. Volunteer stewards are always welcome.

Continued on page 51



Mark Your Calendar
JUNE 18-19

NEW IN ESSEX

Summer ARTS Festival

FREE on the Essex Town Green
And Visit Spectrum Gallery's
Festival Group Gallery Show
May 27-July 10

Open Reception Friday, May 27 (6:30pm)

All purchases support local & regional artists, as well as, the non-profit Arts Center Killingworth & Spectrum Gallery

Art Classes & Summer Camps
Shop Online Spectrum Anytime
Spectrum Gallery in Centerbrook (860) 767-0742
www.spectrumartgallery.org
Arts Center Killingworth (860) 663-5593
www.artscenterkillingworth.org

THE COPPER BEECH INN

46 MAIN STREET
IVORYTON, CT, 06442
(860)767-0330



CELEBRATE SUMMER AT
THE COPPER BEECH INN!

OUR OUTDOOR DINING IS NOW OPEN!

ENJOY FINE FOODS WHILE ENJOYING
ALL NATURE HAS TO OFFER.

RESERVATIONS RECOMMENDED.

Give a freshly-crafted
birthday gift



Save \$5.00
with this coupon
Code: 86342319 Expires 9/30/16

edible arrangements
ediblearr.com

243 State Street / New London, CT / 860-437-3166
240 Post Road / Westerly, RI / 401-322-8800

*Offer expires 9/30/16. Cannot be combined with any other offer. Restrictions may apply. See store for details. Lobbie®, Edible Arrangements®, the Fruit Basket Logo, and other marks mentioned herein are registered trademarks of Edible Arrangements, LLC. © 2016 Edible Arrangements, LLC. All rights reserved.

The Trust maintained Preserves are:

George and Woodward H. Griswold, 51 acres; Jericho, 50 acres; Lohmann Buck Twining, 46 acres; Boggy Hole, 44 acres; Mile Creek, 44 acres; Hatchetts Hill, 44 acres; John Lohmann CT River, 40 acres; Hoffman-Matthiessen-DeGerenday, 40 acres; Goberis Chadwick, 26 acres; Elizabeth B. Karter Watch Rock, 25 acres; Bob & Esther Heller, 16 acres; Belton Copp, 4 acres.

The Trust recently received a grant from the CT Department of Energy & Environmental Protection. The grant was used to acquire 40 acres of forest and wetlands at 106 Four Mile River Road in the Upper Three Mile River Watershed. This property will be the main access to a new 120-acre Upper Three Mile River Preserve, the Trust's largest.

This year Old Lyme Land Trust invites you to join us in celebrating 50 years of local conservation! Be a part of the fun as we sponsor events at our preserves and with other town groups. Look for us at the Midsummer Festival, where you can meet some local inhabitants of the Preserves as well as some exciting feathered friends. Better yet, join our volunteers to help maintain these precious spaces and have some fun at the same time. For more information on joining in, maps, and details of events are on our web page as they become available,

please visit our webpage at www.OldLymeLandTrust.org. Mark your calendars for these upcoming fun and educational events:

Saturday, June 4 1:30 – 3 pm. National Trails Day Hike at John Lohmann CT River Preserve.

Saturday, July 30. Old Lyme Midsummer Festival.

September TBD. 3rd Annual Old Lyme Kayak Regatta.

Saturday, September 24. CT River Swallow Cruise.

Town Hours & Holiday Schedule

Town Hall will be closed on the following Holidays in 2016:

Monday, May 30 – Memorial Day

Monday, July 4 – Independence Day

Monday, September 5 – Labor Day

Hours for most departments: Monday through Friday, 9:00 am – 4:00 pm.



2016 SEASON

TICKETS ON SALE NOW!



THE 39 STEPS

By Patrick Barlow and John Buchan
JUNE 1ST - JUNE 19TH



CHICAGO

By Fred Ebb, Bob Fosse and John Kander
JUNE 29TH - JULY 24TH

103 MAIN STREET | IVORYTON, CT 06442 | 860.767.7318 | IVORYTONPLAYHOUSE.ORG



COLDWELL BANKER

RESIDENTIAL BROKERAGE



***Our Presence in Old Lyme
Village is VERY Strong!
Call us today!***

Evan Griswold
(860)395-4420

Jodi Strycharz
(860)884-3011



12 Lieutenant River Lane
\$1,100,000
Village Waterfront with dock



24 McCurdy Rd \$425,000
1st Floor Bedroom - Great Views
Listed by Jodi Strycharz



13 Binney Rd \$2,100,000
Waterfront - Dock - Sunsets



8 Sill Lane \$1,975,000
Guest House - Dock - Pool
Listed by Jodi Strycharz



56 Lyme St \$675,000
1.5 Acres in Village



UNDER DEPOSIT
7 McCurdy
\$1,495,000
Home - Guest House



UNDER DEPOSIT
14 Ferry Rd C-1 \$480,000
Lyme Regis Condo



UNDER DEPOSIT
11 McCurdy Rd
Level Lot \$305,000



UNDER DEPOSIT
12 Johnny Cake Hill \$725,000
1st floor Master Suite



Think Big

Posters and Prints

up to 24" wide

Gloss, matte, semi-gloss ...

Epson Ultra Chrome Technology

Foam core mounting available



Essex Printing

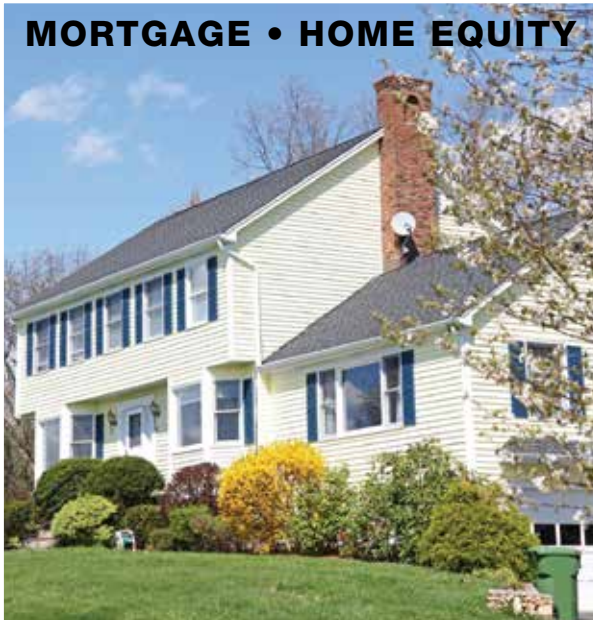


OLD LYME EVENTS
Old Lyme Town Hall
Lyme Street
Old Lyme, CT 06371

PRSR STD
U.S. Postage
PAID
Permit No. 155
Deep River, CT

POSTAL CUSTOMER

MORTGAGE • HOME EQUITY



BUSINESS • COMMERCIAL



Awesome Loan Rates
essexsavings.com



Essex, 35 Plains Road, 860-767-2573 • Essex, 9 Main Street, 860-767-8238 • Chester, 203 Middlesex Avenue, 860-526-0000
Madison, 99 Durham Road, 203-318-8611 • Old Lyme, 101 Halls Road, 860-434-1646 • Old Saybrook, 155 Main Street, 860-388-3543

Call Toll-Free: 877-377-3922 • www.essexsavings.com

Member FDIC

 Equal Housing Lender